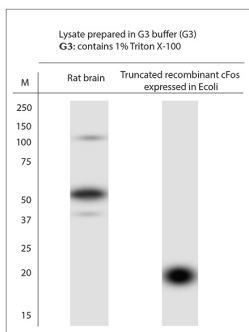


Rabbit antibody to cFos

| | |
|-----------------------|---|
| Code | OSR00004W |
| ID Tag | Rb4267-10102023-WS |
| Unit size | 100 ul |
| Immunogen | A synthetic peptide from human cFos protein conjugated to blue carrier protein has been used as the antigen. The peptide is homologous in many other species including rat and mouse. |
| Purity | Whole serum |
| Conjugate | Unconjugated antibody |
| Also known | Proto-oncogene protein cFOS, c-Fos |
| Host | NZ white rabbit |
| Purity | Whole serum |
| Clonality | Polyclonal antibody |
| Isotype | Polyclonal, whole serum |
| Applications | IHC, WB. Use at a dilution of 1 : 1000 to 1 : 2000. The optimal dilution should be determined by the end user. Not yet tested in other applications. For WB, the lysate must be prepared in G1 lysing buffer which is: Ripa lysing buffer containing 1% Triton X-100; 1% SDS; 1% SDC. |
| Specificity | Specific for cFos. |
| Spcs X-react. | Rat, mouse, marmoset. Other species not yet tested. |
| Format | Lyophilised |
| Reconstitution | Reconstitute in 100 ul of sterile water. Centrifuge to remove any insoluble material. |
| Storage | Maintain the lyophilised/reconstituted antibodies frozen at -20C for long term storage and refrigerated at 2-8C for a shorter term. When reconstituting, glycerol (1:1) may be added for an additional stability. Avoid freeze and thaw cycles. |
| Expiry Date | 12 months after purchase |
| Shipping | This item will be shipped to you at ambient temperature in a lyophilised form. |
| Limitation | For research use only |



WB. Blocking: 1% LFDM for 30 min at RT; primary antibody dilution 1:1000 incubated at 4C overnight. Click on eLAB BOOK tab to see the details.