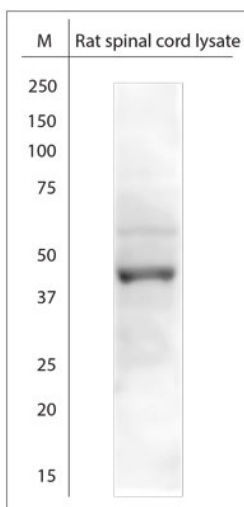


Goat antibody to KCNJ10

Code	OSP00134W
ID Tag	Gt244-180710-WS
Unit size	100 ul
Immunogen	A synthetic peptide from aa region 330-379 of human KCNJ10 conjugated to blue carrier protein was used as the antigen.
Conjugate	Unconjugated antibody
Also known	ATP-sensitive inward rectifier potassium channel 10, Potassium channel, inwardly rectifying subfamily J member 10, Inward rectifier K(+) channel Kir1.2, ATP-dependent inwardly rectifying potassium channel Kir4.1
Host	Goat
Purity	Whole serum
Clonality	Polyclonal
Isotype	Polyclonal, whole serum
Applications	IHC, WB (confirmed by recombinant protein). A dilution of 1 : 300 to 1 : 2000 is recommended. The optimal dilution should be determined by the end user. Not yet tested in other applications.
Specificity	Specific for KCNJ10.
Spcs X-react.	Rat, mouse, human. Other species not yet tested.
Format	Lyophilised
Reconstitution	Reconstitute in 100 ul of sterile water. Centrifuge to remove any insoluble material.
Storage	Maintain the lyophilised/reconstituted antibodies frozen at -20C for long term storage and refrigerated at 2-8C for a shorter term. When reconstituting, glycerol (1:1) may be added for an additional stability. Avoid freeze and thaw cycles.
Expiry Date	12 months after reconstitution
Shipping	This item will be shipped to you at ambient temperature in a lyophilised form.
Limitation	For research use only



WB on rat spinal cord lysate. Primary antibody was used at 1:500 dilution incubated overnight at 4C.

Related Products

OSK00006W	Rabbit antibody to KCNJ10
OSK00007G	Rabbit antibody to KCNJ10 (330-379)