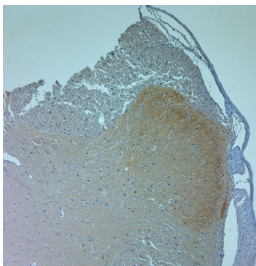


Rabbit antibody to Ankyrin G (2600-2650)

Code	OSA00143W
ID Tag	Rb1578-120910-WS
Unit size	100 µl
Immunogen	A synthetic peptide from aa region 2600-2650 of human Ankyrin G conjugated to blue carrier protein was used as the antigen.
Conjugate	Unconjugated antibody
Also known	ANK-3, Ankyrin G
Host	NZ white rabbit
Purity	Whole serum
Clonality	Polyclonal
Isotype	Polyclonal, whole serum
Applications	IHC, WB (confirmed by recombinant protein). A dilution of 1 : 300 to 1 : 2000 is recommended. The optimal dilution should be determined by the end user. Not yet tested in other applications.
Specificity	Specific for ANKG.
Spcs X-react.	Human. Other species not yet tested.
Format	Lyophilised
Reconstitution	Reconstitute in 100 µl of sterile water. Centrifuge to remove any insoluble material.
Storage	Maintain the lyophilised/reconstituted antibodies frozen at -20°C for long term storage and refrigerated at 2-8°C for a shorter term. When reconstituting, glycerol (1:1) may be added for an additional stability. Avoid freeze and thaw cycles.
Expiry Date	12 months after reconstitution
Shipping	This item will be shipped to you at ambient temperature in a lyophilised form.
Limitation	For research use only



Rat spinal cord-1