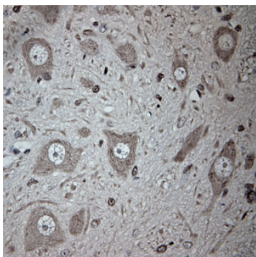


Rabbit antibody to Tubulin beta

Code	OST00359G
ID Tag	Rb1025-280609-G
Unit size	500 Å, Åµg
Immunogen	A synthetic peptide from the c-terminal region of human Tubulin beta chain (TUBB5, TUBB2) conjugated to an immunogenic carrier protein was used as the antigen. The peptide is homologous in many other species including rat, mouse, zebrafish and xenopus.
Conjugate	Unconjugated antibody
Also known	TBB5, Tubulin beta-5 chain, TUBB, TUBB5, Tubulin beta-2A chain, TUBB2A, TUBB2, Tubulin beta-2B chain, Tubulin beta-2C chain
Host	NZ white rabbit
Purity	Whole serum
Clonality	Polyclonal
Isotype	Polyclonal, whole serum
Applications	IHC, WB. A concentration of 10-50 µg/ml is recommended. The optimal concentration should be determined by the end user. Not yet tested in other applications.
Specificity	Specific for Tubulin beta chain.
Spcs X-react.	Mouse, rat, human, xenopus, zebrafish. Not yet tested in other species.
Format	Lyophilised
Reconstitution	Reconstitute in 500 µl of sterile water. Centrifuge to remove any insoluble material.
Storage	Maintain the lyophilised/reconstituted antibodies frozen at -20°C for long term storage and refrigerated at 2-8°C for a shorter term. When reconstituting, glycerol (1:1) may be added for an additional stability. Avoid freeze and thaw cycles.
Expiry Date	12 months after reconstitution
Shipping	This item will be shipped to you at ambient temperature in a lyophilised form.
Limitation	For research use only



IHC on rat spinal cord (paraffin section) using Rabbit antibody to Tubulin beta (OST00359G) at a dilution of 30 µg/ml incubated overnight at 4C, developed with DAB/Ni.

Related Products

OST00306W Rabbit antibody to beta Tubulin