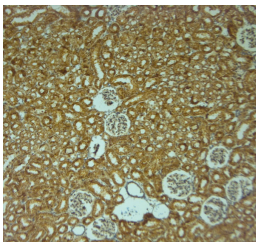


## Rabbit antibody to P2RY1

<b>Code</b>	OSP00119W
<b>ID Tag</b>	Rb1426-250410-WS
<b>Unit size</b>	100 µl
<b>Immunogen</b>	A synthetic peptide from the c-terminal region of mouse P2Y1 (P2RY1) conjugated to an immunogenic carrier protein was used as the antigen.
<b>Conjugate</b>	Unconjugated antibody
<b>Also known</b>	P2Y purinoceptor 1, P2Y1, Purinergic receptor, ATP receptor
<b>Host</b>	NZ white rabbit
<b>Purity</b>	Whole serum
<b>Clonality</b>	Polyclonal
<b>Isotype</b>	Polyclonal, whole serum
<b>Applications</b>	IHC, WB. A dilution of 1 : 300 to 1 : 2000 is recommended. The optimal dilution should be determined by the end user. Not yet tested in other applications.
<b>Specificity</b>	Specific for P2RY1.
<b>Spcs X-react.</b>	Mouse, rat, guinea pig. Other species not yet tested.
<b>Format</b>	Lyophilised
<b>Reconstitution</b>	Reconstitute in 100 µl of sterile water. Centrifuge to remove any insoluble material.
<b>Storage</b>	Maintain the lyophilised/reconstituted antibodies frozen at -20°C for long term storage and refrigerated at 2-8°C for a shorter term. When reconstituting, glycerol (1:1) may be added for an additional stability. Avoid freeze and thaw cycles.
<b>Expiry Date</b>	12 months after reconstitution
<b>Shipping</b>	This item will be shipped to you at ambient temperature in a lyophilised form.
<b>Limitation</b>	For research use only



```

/* Font Definitions */
@font-face
{font-family:Arial;
panose-1:2 11 6 4 2 2 2 2 4;
mso-font-charset:0;
mso-generic-font-family:auto;
mso-font-pitch:variable;
mso-font-signature:3 0 0 0 1 0;}
@font-face
{font-family:Cambria;
panose-1:2 4 5 3 5 4 6 3 2 4;
mso-font-charset:0;
mso-generic-font-family:auto;
mso-font-pitch:variable;
mso-font-signature:3 0 0 0 1 0;}
/* Style Definitions */
p.MsoNormal, li.MsoNormal, div.MsoNormal
{mso-style-parent:"";
margin-top:0cm;
margin-right:0cm;
margin-bottom:10.0pt;
margin-left:0cm;

```

## Rabbit antibody to P2RY1

```
mso-pagination:widow-orphan;  
font-size:12.0pt;  
font-family:"Times New Roman";  
mso-ascii-font-family:Arial;  
mso-fareast-font-family:Cambria;  
mso-fareast-theme-font:minor-latin;  
mso-hansi-font-family:Arial;  
mso-bidi-font-family:"Times New Roman";  
mso-bidi-theme-font:minor-bidi;}  
@page Section1  
{size:612.0pt 792.0pt;  
margin:72.0pt 90.0pt 72.0pt 90.0pt;  
mso-header-margin:36.0pt;  
mso-footer-margin:36.0pt;  
mso-paper-source:0;}  
div.Section1  
{page:Section1;}  
-->
```

IHC on paraffin sections of rat kidney tissue using Rabbit antibody to P2RY1: OSP00119W.

HIER: 1 mM EDTA, pH 8 for 20 min using Thermo PT Module.

Blocking: 0.2% LFDM in TBST filtered thru 0.2 µm.

Detection was done using Novolink HRP polymer from Leica following manufacturer's instructions.

Primary antibody: dilution 1: 1000, incubated 30 min at RT (using Autostainer).

Sections were counterstained with Harris Hematoxylin.