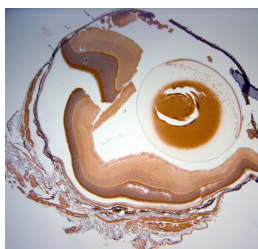


Rabbit antibody to Optineurin

Code	OSO00040W
ID Tag	Rb1320-140310-WS
Unit size	100 ul
Immunogen	A synthetic peptide from internal region of mouse Optineurin conjugated to blue carrier protein was used as the antigen.
Conjugate	Unconjugated antibody
Also known	OPTN, Optic neuropathy-inducing protein, E3-14.7K-interacting protein FIP-2, Huntingtin-interacting protein L, Huntingtin yeast partner L, Huntingtin-interacting protein 7, HIP-7, NEMO-related protein, Transcription factor IIIA-interacting protein, TFIIIA-IntP
Host	NZ white rabbit
Purity	Whole serum
Clonality	Polyclonal
Isotype	Polyclonal, whole serum
Applications	IHC, WB. A dilution of 1 : 2000 is recommended for WB and 1 : 1000 IHC-P. The optimal dilution should be determined by the end user. Not yet tested in other applications.
Specificity	Specific for Optineurin.
Spcs X-react.	Mouse. Other species not yet tested.
Format	Lyophilised
Reconstitution	Reconstitute in 100 ul of sterile water. Centrifuge to remove any insoluble material.
Storage	Maintain the lyophilised/reconstituted antibodies frozen at -20C for long term storage and refrigerated at 2-8C for a shorter term. When reconstituting, glycerol (1:1) may be added for an additional stability. Avoid freeze and thaw cycles.
Expiry Date	12 months after reconstitution
Shipping	This item will be shipped to you at ambient temperature in a lyophilised form.
Limitation	For research use only



IHC-P on paraffin sections of mouse eye.

The animal was perfused using Autoperfuser at a pressure of 130 mmHg with 300 ml 4% FA and further post fixed overnight before being processed for paraffin embedding. HIER: Tris-EDTA, pH 9 for 20 min using Thermo PT Module.

Blocking: 0.2% LFDM in TBST filtered thru 0.2 µm.

Detection was done using Novolink HRP polymer from Leica following manufacturers instructions; DAB chromogen: Candela DAB chromogen from Osenses.

Primary antibody: dilution 1: 1000, incubated 30 min at RT using Autostainer.

Sections were counterstained with Harris Hematoxylin.