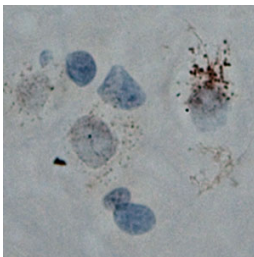


Rabbit antibody to Cullin5

Code	OSC00210W
ID Tag	Rb1208-051209-WS
Unit size	100 ul
Immunogen	A synthetic peptide from the n-terminal of human Cullin 5 (Vasopressin activated calcium-mobilizing receptor 1) conjugated to blue carrier protein was used as the antigen.
Conjugate	Unconjugated antibody
Also known	CUL-5, Vasopressin-activated calcium-mobilizing receptor 1, VACM-1, VACM1
Host	NZ white rabbit
Purity	Whole serum
Clonality	Polyclonal
Isotype	Polyclonal, whole serum
Applications	IHC, WB. A dilution of 1: 300 to 1 : 2000 is recommended. The optimal dilution should be determined by the end user. Not yet tested in other applications.
Specificity	Specific for Cullin5.
Spcs X-react.	Human, rat, mouse. Other species not yet tested.
Format	Lyophilised
Reconstitution	Reconstitute in 100 ul of sterile water. Centrifuge to remove any insoluble material.
Storage	Maintain the lyophilised/reconstituted antibodies frozen at -20C for long term storage and refrigerated at 2-8C for a shorter term. When reconstituting, glycerol (1:1) may be added for an additional stability. Avoid freeze and thaw cycles.
Expiry Date	12 months after reconstitution
Shipping	This item will be shipped to you at ambient temperature in a lyophilised form.
Limitation	For research use only



IHC on rat spinal cord (paraffin section) using Rabbit antibody to n-terminal of Cullin 5 (OSC00210W) at 1 : 200 dilution incubated overnight at 4C, developed with DAB/Ni and counterstained with hematoxylin.