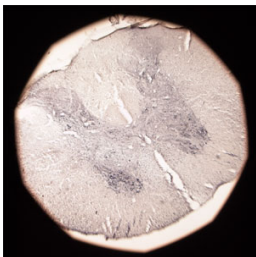


Rabbit antibody to P2RY13

Code	OSP00096W
ID Tag	Rb962-280609-WS
Unit size	100 µl
Immunogen	A synthetic peptide from the c-terminal region of human P2Y13 (P2RY13) conjugated to an immunogenic carrier protein was used as the antigen.
Conjugate	Unconjugated antibody
Also known	P2Y purinoceptor 13, P2RY13, G-protein coupled receptor 86, G-protein coupled receptor 94
Host	NZ white rabbit
Purity	Whole serum
Clonality	Polyclonal
Isotype	Polyclonal, whole serum
Applications	IHC, WB. A dilution of 1 : 200 to 1 : 2000 is recommended. The optimal dilution should be determined by the end user. Not yet tested in other applications.
Specificity	Specific for P2RY13.
Spcs X-react.	Human, rat. Other species not yet tested.
Format	Lyophilised
Reconstitution	Reconstitute in 100 µl of sterile water. Centrifuge to remove any insoluble material.
Storage	Maintain the lyophilised/reconstituted antibodies frozen at -20°C for long term storage and refrigerated at 2-8°C for a shorter term. When reconstituting, glycerol (1:1) may be added for an additional stability. Avoid freeze and thaw cycles.
Expiry Date	12 months after reconstitution
Shipping	This item will be shipped to you at ambient temperature in a lyophilised form.
Limitation	For research use only



IHC on rat spinal cord (free floating sections) using Rabbit antibody to c-terminal region of P2Y13 (P2RY13): whole serum (OSP00096W) at 1 : 300 dilution incubated overnight at room temperature (21C) and developed with DAB/Ni.

Related Products

OSP00139W Goat antibody to P2RY13