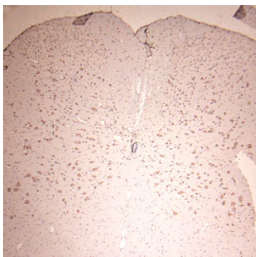


## Rabbit antibody to Lamp1

<b>Code</b>	OSL00011W
<b>ID Tag</b>	Rb1212-051209-WS
<b>Unit size</b>	100 ul
<b>Immunogen</b>	A synthetic peptide to from second luminal domain of mouse Lamp1 (CD107a) conjugated to blue carrier protein was used as the antigen. The peptide is homologous in rat.
<b>Conjugate</b>	Unconjugated antibody
<b>Also known</b>	Lysosome-associated membrane glycoprotein 1, Lamp 1, Lamp-1, Lysosome-associated membrane protein 1, Lysosomal membrane glycoprotein A, LGP-A, 120 kDa lysosomal membrane glycoprotein, LGP-120, P2B, CD107 antigen-like family member A, CD107a
<b>Host</b>	NZ white rabbit
<b>Purity</b>	Whole serum
<b>Clonality</b>	Polyclonal
<b>Isotype</b>	Polyclonal, whole serum
<b>Applications</b>	IHC, WB. A dilution of 1: 300 to 1: 2000 is recommended. The optimal dilution should be determined by the end user. Not yet tested in other applications.
<b>Specificity</b>	Specific for Lamp1.
<b>Spcs X-react.</b>	Mouse, rat. Other species not yet tested.
<b>Format</b>	Lyophilised
<b>Reconstitution</b>	Reconstitute in 100 ul of sterile water. Centrifuge to remove any insoluble material.
<b>Storage</b>	Maintain the lyophilised/reconstituted antibodies frozen at -20C for long term storage and refrigerated at 2-8C for a shorter term. When reconstituting, glycerol (1:1) may be added for an additional stability. Avoid freeze and thaw cycles.
<b>Expiry Date</b>	12 months after reconstitution
<b>Shipping</b>	This item will be shipped to you at ambient temperature in a lyophilised form.
<b>Limitation</b>	For research use only



IHC on rat spinal cord (paraffin section) using Rabbit antibody to Lamp1 (OSL00011W) at 1 : 200 dilution incubated overnight at 4C, developed with DAB/Ni and counterstained with hematoxylin.