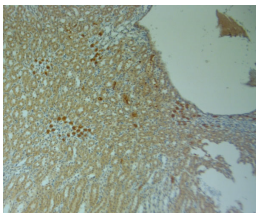


## Rabbit antibody to Connexin 40

<b>Code</b>	OSC00189W
<b>ID Tag</b>	Rb1191-260909-WS
<b>Unit size</b>	100 ul
<b>Immunogen</b>	A synthetic peptide from mouse Connexin-40 conjugated to an blue carrier protein was used as the antigen. The peptide shares 95% identity with rat sequence.
<b>Conjugate</b>	Unconjugated antibody
<b>Also known</b>	CXA5, Gap junction alpha-5 protein, Connexin 40, Connexin40, GJA5
<b>Host</b>	NZ white rabbit
<b>Purity</b>	Whole serum
<b>Clonality</b>	Polyclonal
<b>Isotype</b>	Polyclonal, whole serum
<b>Applications</b>	IHC, WB. A dilution of 1 : 300 to 1 : 2000 is recommended. The optimal dilution should be determined by the end user. Not yet tested in other applications.
<b>Specificity</b>	Specific for Connexin-40.
<b>Spcs X-react.</b>	Mouse. Other species not yet tested but expected to work in rat.
<b>Format</b>	Lyophilised
<b>Reconstitution</b>	Reconstitute in 100 ul of sterile water. Centrifuge to remove any insoluble material.
<b>Storage</b>	Maintain the lyophilised/reconstituted antibodies frozen at -20C for long term storage and refrigerated at 2-8C for a shorter term. When reconstituting, glycerol (1:1) may be added for an additional stability. Avoid freeze and thaw cycles.
<b>Expiry Date</b>	12 months after reconstitution
<b>Shipping</b>	This item will be shipped to you at ambient temperature in a lyophilised form.
<b>Limitation</b>	For research use only



IHC on paraffin sections of rat kidney tissue using Rabbit antibody to Connexin 40: OSC00189W. HIER: 1 mM EDTA, pH 8 for 20 min using Thermo PT Module. Blocking: 0.2% LFD in TBST filtered thru 0.2 µm. Detection was done using Novolink HRP polymer from Leica following manufactures instructions. Primary antibody: dilution 1: 1000, incubated 30 min at RT (using Autostainer. Sections were counterstained with Harris Hematoxylin.