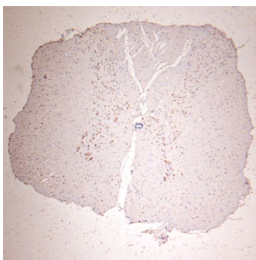


Rabbit antibody to GLUR6

Code	OSG00059W
ID Tag	Rb1175-260909-WS
Unit size	100 ul
Immunogen	A synthetic peptide from 1 st extracellular domain of mouse GRIK2 (GLUR6, Glutamate receptor 6) conjugated to blue carrier protein was used as the antigen.
Conjugate	Unconjugated antibody
Also known	Glutamate receptor, ionotropic kainate 2, Glutamate receptor 6, GluR-6, GluR6, Excitatory amino acid receptor 4, EAA4, Glutamate receptor beta-2
Host	NZ white rabbit
Purity	Whole serum
Clonality	Polyclonal
Isotype	Polyclonal, whole serum
Applications	IHC, WB. A dilution of 1 : 300 to 1 : 2000 is recommended. The optimal dilution should be determined by the end user. Not yet tested in other applications.
Specificity	Specific for GRIK2.
Spcs X-react.	Mouse, rat, human. Other species not yet tested.
Format	Lyophilised
Reconstitution	Reconstitute in 100 µl of sterile water. Centrifuge to remove any insoluble material.
Storage	Maintain the lyophilised/reconstituted antibodies frozen at -20C for long term storage and refrigerated at 2-8C for a shorter term. When reconstituting, glycerol (1:1) may be added for an additional stability. Avoid freeze and thaw cycles.
Expiry Date	12 months after reconstitution
Shipping	This item will be shipped to you at ambient temperature in a lyophilised form.
Limitation	For research use only



IHC on rat spinal cord (paraffin section) using Rabbit antibody to GLUR6 (OSG00059W) at 1 : 200 dilution, incubated overnight at 4C, developed with DAB/Ni and counterstained with hematoxylin.