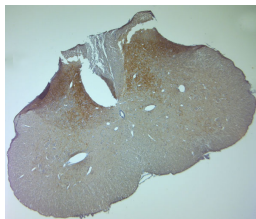


Rabbit antibody to VGluT1 (2-50)

Code	OSV00069W
ID Tag	Rb1163-260909-WS
Unit size	100 µl
Immunogen	A synthetic peptide from aa region 2-50 of human VGluT1 conjugated to blue carrier protein was used as the antigen. The peptide is homologous in rat and mouse.
Conjugate	Unconjugated antibody
Also known	Vesicular glutamate transporter 1, VGLUT1, Solute carrier family 17 member 7, Brain-specific Na(+)-dependent inorganic phosphate cotransporter, Bnpi
Host	NZ white rabbit
Purity	Whole serum
Clonality	Polyclonal
Isotype	Polyclonal, whole serum
Applications	WB, IHC-P, IHC-Fr, ICC, Flow Cyt, ICC/IF. A dilution of 1: 6000 is recommended for WB and 1:2000 for IHC-P. The optimal dilution should be determined by the end user. Not yet tested in other applications.
Specificity	Specific for VGLUT1 (both isoforms 1 and 2).
Spcs X-react.	Human, rat, mouse. Other species not yet tested.
Format	Lyophilised
Reconstitution	Reconstitute in 100 µl of sterile water. Centrifuge to remove any insoluble material.
Storage	Maintain the lyophilised/reconstituted antibodies frozen at -20°C for long term storage and refrigerated at 2-8°C for a shorter term. When reconstituting, glycerol (1:1) may be added for an additional stability. Avoid freeze and thaw cycles.
Expiry Date	12 months after reconstitution
Shipping	This item will be shipped to you at ambient temperature in a lyophilised form.
Limitation	For research use only



IHC on paraffin sections of rat spinal cord using Rabbit antibody to VGluT1 (2-50): OSV00069W.
 HIER: 1 mM EDTA, pH 8 for 20 min using Thermo PT Module
 Blocking: 0.2% LFDM in TBST filtered thru 0.2 µm
 Detection was done using Novolink HRP polymer from Leica following manufacturer's instructions.
 Primary antibody: dilution 1: 2000, incubated 30 min at RT (using Autostainer)
 Sections were counterstained with Harris Hematoxylin.

Related Products

OSV00086W Goat antibody to VGluT1 (2-50)