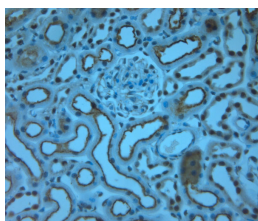


Rabbit antibody to RAB6A

Code	OSR00344W
ID Tag	Rb1086-130909-WS
Unit size	100 Åµl
Immunogen	A synthetic peptide from c-terminal region of human Ras-related protein Rab-6A (RAB6A) conjugated to blue carrier protein has been used as the antigen. The antigen shares 85% identity with RAB6C.
Conjugate	Unconjugated antibody
Also known	RAB6A, RAB6C
Host	NZ white rabbit
Purity	Whole serum
Clonality	Polyclonal
Isotype	Polyclonal, whole serum
Applications	IHC, WB. Use at a dilution of 1:300 to 1: 2000. The optimal dilution should be determined by the end user. Not yet tested in other applications.
Specificity	Specific for RAB6A
Spcs X-react.	Human, rat, mouse. Other species not yet tested.
Format	Lyophilised
Reconstitution	Reconstitute in 100 Åµl of sterile water. Centrifuge to remove any insoluble material.
Storage	Maintain the lyophilised/reconstituted antibodies frozen at -20Å°C for long term storage and refrigerated at 2-8Å°C for a shorter term. When reconstituting, glycerol (1:1) may be added for an additional stability. Avoid freeze and thaw cycles.
Expiry Date	12 months after reconstitution
Shipping	This item will be shipped to you at ambient temperature in a lyophilised form.
Limitation	For research use only



IHC-P on paraffin sections of rat kidney. The animal was perfused using Autoperfuser at a pressure of 110 mmHg with 300 ml 4% FA and further post fixed overnight before being processed for paraffin embedding. HIER: Tris-EDTA, pH 9 for 20 min using Thermo PT Module. Blocking: 0.2% LFDM in TBST filtered thru 0.2 Åµm. Detection was done using Novolink HRP polymer from Leica following manufacturers instructions. Primary antibody: dilution 1: 1000, incubated 30 min at RT (using Autostainer). Sections were counterstained with Harris Hematoxylin.