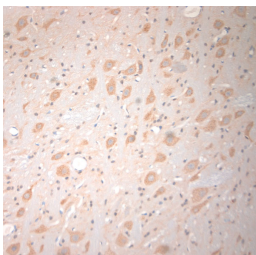


Rabbit antibody to VTI1B

Code	OSV00068W
ID Tag	Rb1104-130909-WS
Unit size	100 µl
Immunogen	A synthetic peptide from the c-terminal region of human VTI1B conjugated to an immunogenic carrier protein was used as the antigen.
Conjugate	Unconjugated antibody
Also known	Vesicle transport through interaction with t-SNAREs homolog 1B, Vesicle transport v-SNARE protein Vti1-like 1, Vti1-rp1, VTI1, VTI1L, VTI1L1, VTI2
Host	NZ white rabbit
Purity	Whole serum
Clonality	Polyclonal
Isotype	Polyclonal, whole serum
Applications	IHC, WB. A dilution of 1 : 300 to 1 : 2000 is recommended. The optimal dilution should be determined by the end user. Not yet tested in other applications.
Specificity	Specific for VTI1B.
Spcs X-react.	Human, mouse, rat. Other species not yet tested.
Format	Lyophilised
Reconstitution	Reconstitute in 100 µl of sterile water. Centrifuge to remove any insoluble material.
Storage	Maintain the lyophilised/reconstituted antibodies frozen at -20°C for long term storage and refrigerated at 2-8°C for a shorter term. When reconstituting, glycerol (1:1) may be added for an additional stability. Avoid freeze and thaw cycles.
Expiry Date	12 months after reconstitution
Shipping	This item will be shipped to you at ambient temperature in a lyophilised form.
Limitation	For research use only



IHC-P on paraffin sections of rat brain. The animal was perfused using Autoperfuser at a pressure of 110 mmHg with 300 ml 4% FA and further post fixed overnight before being processed for paraffin embedding. HIER: Tris-EDTA, pH 9 for 20 min using Thermo PT Module. Blocking: 0.2% LFDM in TBST filtered thru 0.2 µm. Detection was done using Novolink HRP polymer from Leica following manufacturers instructions. Primary antibody: dilution 1: 1000, incubated 30 min at RT (using Autostainer). Sections were counterstained with Harris Hematoxylin.