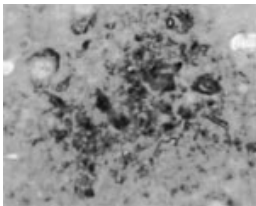


Rabbit antibody to Runx3 (160-210)

| | |
|-----------------------|--|
| Code | OSR00334W |
| ID Tag | Rb1078-020809-WS |
| Unit size | 100 µl |
| Immunogen | A synthetic peptide from aa region 160-210 of human RUNX3 conjugated to an immunogenic carrier protein was used as the antigen. The peptide is homologous in rat and mouse. |
| Conjugate | Unconjugated antibody |
| Also known | Runx3, Core-binding factor, alpha 3 subunit, CBF-alpha 3, Acute myeloid leukemia 2 protein, Oncogene AML-2, Polyomavirus enhancer-binding protein 2 alpha C subunit, PEBP2-alpha C, PEA2-alpha C, SL3-3 enhancer factor 1 alpha C subunit, SL3/AKV core-binding factor alpha C subunit |
| Host | NZ white rabbit |
| Purity | Whole serum |
| Clonality | Polyclonal |
| Isotype | Polyclonal, whole serum |
| Applications | IHC, WB. A dilution of 1 : 300 to 1 : 2000 is recommended. The optimal dilution should be determined by the end user. Not yet tested in other applications. |
| Specificity | Specific for Runx3. |
| Spcs X-react. | Human, rat. Other species not yet tested. |
| Format | Lyophilised |
| Reconstitution | Reconstitute in 100 µl of sterile water. Centrifuge to remove any insoluble material. |
| Storage | Maintain the lyophilised/reconstituted antibodies frozen at -20°C for long term storage and refrigerated at 2-8°C for a shorter term. When reconstituting, glycerol (1:1) may be added for an additional stability. Avoid freeze and thaw cycles. |
| Expiry Date | 12 months after reconstitution |
| Shipping | This item will be shipped to you at ambient temperature in a lyophilised form. |
| Limitation | For research use only |



IHC on rat spinal cord (paraffin section) using Rabbit antibody to RUNX3 (OSR00334W) at 1 : 300 dilution incubated overnight at 4C.