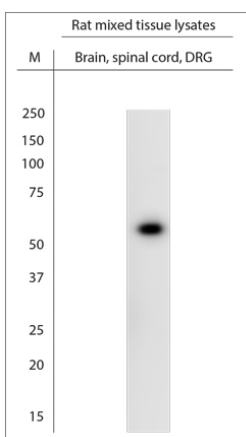


Rabbit antibody to VMAT1

Code	OSV00059W
ID Tag	Rb1068-020809-WS
Unit size	100 µl
Immunogen	A synthetic peptide from human VMAT1 conjugated to blue carrier protein was used as the antigen. The peptides shares about 75% identity with mouse and rat sequences.
Conjugate	Unconjugated antibody
Also known	VMAT1, Chromaffin granule amine transporter, VAT1, Solute carrier family 18 member 1, SLC18A1
Host	NZ white rabbit
Purity	Whole serum
Clonality	Polyclonal
Isotype	Polyclonal, whole serum
Applications	WB, IHC. A dilution of 1: 1000 is recommended. The optimal dilution should be determined by the end user. Not yet tested in other applications.
Specificity	Specific for VMAT1.
Spcs X-react.	Human, rat, mouse. Other species not yet tested.
Format	Lyophilised
Reconstitution	Reconstitute in 100 µl of sterile water. Centrifuge to remove any insoluble material.
Storage	Maintain the lyophilised/reconstituted antibodies frozen at -20°C for long term storage and refrigerated at 2-8°C for a shorter term. When reconstituting, glycerol (1:1) may be added for an additional stability. Avoid freeze and thaw cycles.
Expiry Date	12 months after reconstitution
Shipping	This item will be shipped to you at ambient temperature in a lyophilised form.
Limitation	For research use only



WB on rat tissue lysates. Blocking: 1% LFDM for 30 min at RT; primary antibody: dilution 1:1000 incubated at 4C overnight. Click on eLAB BOOK tab to see the details.