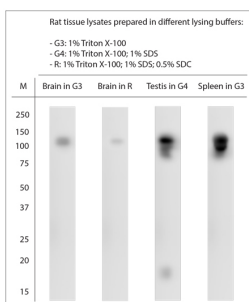


Rabbit antibody to TRPM4

Code	OST00305W
ID Tag	Rb2863-090916-WS
Unit size	100 ul
Immunogen	A synthetic peptide from mouse TRPM4 conjugated to blue carrier protein was used as the antigen. The peptide is homologous in rat.
Conjugate	Unconjugated antibody
Also known	Transient receptor potential cation channel subfamily M member 4, Long transient receptor potential channel 4, Calcium-activated non-selective cation channel 1, Melastatin-like 2, MLS2s
Host	NZ white rabbit
Purity	Whole serum
Clonality	Polyclonal
Isotype	Polyclonal, whole serum
Applications	IHC, WB. A dilution of 1 : 500 is recommended. The optimal dilution should be determined by the end user. Not yet tested in other applications.
Specificity	Specific for TRPM4.
Spcs X-react.	Rat, mouse. Other species not yet tested.
Format	Lyophilised
Reconstitution	Reconstitute in 100 ul of sterile water. Centrifuge to remove any insoluble material.
Storage	Maintain the lyophilised/reconstituted antibodies frozen at -20C for long term storage and refrigerated at 2-8C for a shorter term. When reconstituting, glycerol (1:1) may be added for an additional stability. Avoid freeze and thaw cycles.
Expiry Date	12 months after reconstitution
Shipping	This item will be shipped to you at ambient temperature in a lyophilised form.
Limitation	For research use only



WB on rat tissue lysates. Blocking: 1% LFDM for 30 min at RT; primary antibody: dilution 1:500 incubated overnight at 4C. Click on eLAB BOOK tab to see the details.