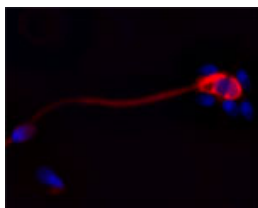


## Mouse monoclonal to Cathelicidin: OSX12 clone

<b>Code</b>	OSC00155G
<b>ID Tag</b>	OSX12-210309
<b>Unit size</b>	100 ug
<b>Immunogen</b>	A synthetic peptide from human Cathelicidin antimicrobial peptide (LL-37) conjugated to blue carrier protein has been used as the antigen.
<b>Conjugate</b>	Unconjugated antibody
<b>Also known</b>	LL37, LL-37
<b>Host</b>	Mouse
<b>Purity</b>	IgG
<b>Clonality</b>	Clone OSX12, monoclonal
<b>Isotype</b>	IgG1,k
<b>Applications</b>	IHC, IF, WB, flow cytometry. Use at a concentration of 5-10 ug/ml. The optimal concentration should be determined by the end user. Not yet tested in other applications.
<b>Specificity</b>	Specific for Cathelicidin antimicrobial peptide.
<b>Spcs X-react.</b>	Human, other species not yet tested.
<b>Format</b>	Lyophilised
<b>Reconstitution</b>	Reconstitute in 100 ul of sterile water. Centrifuge to remove any insoluble material.
<b>Storage</b>	Maintain the lyophilised/reconstituted antibodies frozen at -20C for long term storage and refrigerated at 2-8°C for a shorter term. When reconstituting, glycerol (1:1) may be added for an additional stability. Avoid freeze and thaw cycles.
<b>Expiry Date</b>	12 months after reconstitution
<b>Shipping</b>	This item will be shipped to you at ambient temperature in a lyophilised form.
<b>Limitation</b>	For research use only



IF on ethanol-fixed human spermatozoid using Mouse monoclonal to Cathelicidin: OSX12 clone (OSC00155G) at a concentration of 10 ug/ml. DAPI counterstained appearing in blue.

---

### Related Products

OSC00067W	Rabbit antibody to CAP-18 (70-110)
OSC00028G	Rabbit antibody to LL-37
OSC00066W	Rabbit antibody to CAP-18 (10-60)
OSC00039W	Rabbit antibody to scrambled Cathelicidin
OSC00038G	Sheep antibody to LL-37
OSC00037W	Sheep antibody to LL-37