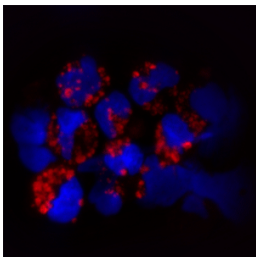


## Rabbit antibody to TLR9 (830-880)

<b>Code</b>	OST00299G
<b>ID Tag</b>	Rb984-280609-G
<b>Unit size</b>	500 Å, Åµg
<b>Immunogen</b>	A synthetic peptide from aa region 830-880 of human TLR9 conjugated to blue carrier protein was used as the antigen.
<b>Conjugate</b>	Unconjugated antibody
<b>Also known</b>	Toll-like receptor 9
<b>Host</b>	NZ white rabbit
<b>Purity</b>	IgG
<b>Clonality</b>	Polyclonal
<b>Isotype</b>	Polyclonal, IgG
<b>Applications</b>	IHC, WB, Flow Cyt. A concentration of 10-50 µg/ml is recommended. The optimal concentration should be determined by the end user. Not yet tested in other applications.
<b>Specificity</b>	Specific for TLR9.
<b>Spcs X-react.</b>	Human. Other species not yet tested.
<b>Format</b>	Lyophilised
<b>Reconstitution</b>	Reconstitute in 500 µl of sterile water. Centrifuge to remove any insoluble material.
<b>Storage</b>	Maintain the lyophilised/reconstituted antibodies frozen at -20°C for long term storage and refrigerated at 2-8°C for a shorter term. When reconstituting, glycerol (1:1) may be added for an additional stability. Avoid freeze and thaw cycles.
<b>Expiry Date</b>	12 months after reconstitution
<b>Shipping</b>	This item will be shipped to you at ambient temperature in a lyophilised form.
<b>Limitation</b>	For research use only



IF on human plasmacytoid dendritic cells. Cells were fixed with 2% formaldehyde for 10 minutes at 37°C. Washed twice with PBS before cytospin the cells onto microscope slides. Cells were blocked with PBS containing 1%BSA for 20 minutes at room temperature (RT). Excess of blocking solution was removed and cells were then incubated with Rabbit antibody to TLR9 (830-880) (OST00299G) for 30 min at RT (diluted 20 µg/ml in the blocking buffer). Washed 3X with PBS and incubated with anti-Rabbit Alexa 586 for further 30 minutes. Washed as before and nuclear counterstained with DAPI.

---

### Related Products

OST00297W	Rabbit antibody to TLR9 (830-880)
OST00315W	Goat antibody to TLR9 (830-880)