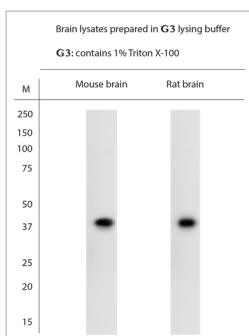


## Rabbit antibody to MRGPRF

<b>Code</b>	OSM00071G
<b>ID Tag</b>	Rb3073-180617-G
<b>Unit size</b>	500 Å, Åµg
<b>Immunogen</b>	A synthetic peptide mouse MRGPRF conjugated to blue carrier protein was used as the antigen.
<b>Conjugate</b>	Unconjugated antibody
<b>Also known</b>	Mas-related G-protein coupled receptor, member F, Mas-related gene F protein, G-protein coupled receptor RTA, Mrgf, Rta, GPR140, GPR168, MGC21621, G-protein coupled receptor 140, G-protein coupled receptor 168
<b>Host</b>	NZ white rabbit
<b>Purity</b>	IgG
<b>Clonality</b>	Polyclonal
<b>Isotype</b>	Polyclonal, IgG
<b>Applications</b>	IHC, WB. A concentration of 10-50 µg/ml is recommended. The optimal concentration should be determined by the end user. Not yet tested in other applications.
<b>Specificity</b>	Specific for MRGPRF.
<b>Spcs X-react.</b>	Rat, mouse. Other species not yet tested.
<b>Format</b>	Lyophilised
<b>Reconstitution</b>	Reconstitute in 500 µl of sterile water. Centrifuge to remove any insoluble material.
<b>Storage</b>	Maintain the lyophilised/reconstituted antibodies frozen at -20°C for long term storage and refrigerated at 2-8°C for a shorter term. When reconstituting, glycerol (1:1) may be added for an additional stability. Avoid freeze and thaw cycles.
<b>Expiry Date</b>	12 months after reconstitution
<b>Shipping</b>	This item will be shipped to you at ambient temperature in a lyophilised form.
<b>Limitation</b>	For research use only



WB on brain lysates. Blocking: 1% LFDN for 30 min at RT; primary antibody: dilution 10 µg/ml incubated at 4°C overnight. Click on eLAB BOOK tab to see the details.

---

### Related Products

OSR00105W Rabbit antibody to MRGPRF