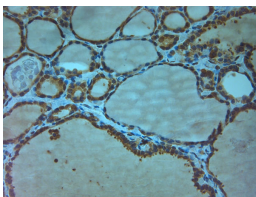


Rabbit antibody to Nav1.8

Code	OSS00156W
ID Tag	Rb943-240509-WS
Unit size	100 ul
Immunogen	A synthetic peptide from the n-terminal region of human Nav1.8 conjugated to blue carrier protein was used as the antigen.
Conjugate	Unconjugated antibody
Also known	Sodium channel protein type X subunit alpha, Voltage-gated sodium channel subunit alpha Nav1.8, Peripheral nerve sodium channel 3, hPN3, SCN10A, PN3
Host	NZ white rabbit
Purity	Whole serum
Clonality	Polyclonal
Isotype	Polyclonal, whole serum
Applications	IHC, WB. A dilution of 1 : 300 to 1 : 2000 is recommended. The optimal dilution should be determined by the end user. Not yet tested in other applications.
Specificity	Specific for Nav1.8.
Spcs X-react.	Human. Other species not yet tested.
Format	Lyophilised
Reconstitution	Reconstitute in 100 ul of sterile water. Centrifuge to remove any insoluble material.
Storage	Maintain the lyophilised/reconstituted antibodies frozen at -20C for long term storage and refrigerated at 2-8C for a shorter term. When reconstituting, glycerol (1:1) may be added for an additional stability. Avoid freeze and thaw cycles.
Expiry Date	12 months after reconstitution
Shipping	This item will be shipped to you at ambient temperature in a lyophilised form.
Limitation	For research use only



IHC on paraffin sections of human thyroid tissue using Rabbit antibody to Nav1.8: OSS00156W. HIER: 1 mM EDTA, pH 8 for 20 min using Thermo PT Module. Blocking: 0.2% LFDM in TBST filtered thru 0.2 µm. Detection was done using Novolink HRP polymer from Leica following manufacturer's instructions. Primary antibody: dilution 1: 1000, incubated 30 min at RT (using Autostainer) Sections were counterstained with Harris Hematoxylin.