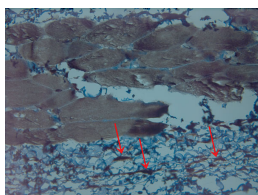


Rabbit antibody to KCNN4

Code	OSK00032W
ID Tag	Rb903-260409-WS
Unit size	100 ul
Immunogen	A synthetic peptide from the c-terminal region of human KCNN4 conjugated to blue carrier protein was used as the antigen. The peptide is homologous in rat and mouse.
Conjugate	Unconjugated antibody
Also known	Intermediate conductance calcium-activated potassium channel protein 4, SK4, KCa4, IKCa1, IK1, IK1, IKCA1, KCA4, SK4
Host	NZ white rabbit
Purity	Whole serum
Clonality	Polyclonal
Isotype	Polyclonal, whole serum
Applications	IHC, WB. A dilution of 1 : 300 to 1 : 2000 is recommended. The optimal dilution should be determined by the end user. Not yet tested in other applications.
Specificity	Specific for KCNN4.
Spcs X-react.	Human, rat, mouse. Other species not yet tested.
Format	Lyophilised
Reconstitution	Reconstitute in 100 ul of sterile water. Centrifuge to remove any insoluble material.
Storage	Maintain the lyophilised/reconstituted antibodies frozen at -20C for long term storage and refrigerated at 2-8C for a shorter term. When reconstituting, glycerol (1:1) may be added for an additional stability. Avoid freeze and thaw cycles.
Expiry Date	12 months after reconstitution
Shipping	This item will be shipped to you at ambient temperature in a lyophilised form.
Limitation	For research use only



IHC on paraffin sections of rat skin using Rabbit antibody to KCNN4: OSK00032W.
 HIER: 1 mM EDTA, pH 8 for 20 min using Thermo's PT Module
 Detection was done using Novolink HRP polymer from Leica following manufacturer's instruction
 Primary antibody: dilution 1: 1000, incubated 30 min at RT (using Autostainer)
 Sections were counterstained with Harris Hematoxylin.

Related Products

OSP00156G Rabbit antibody to KCNN4