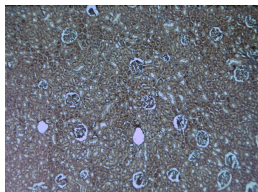


Rabbit antibody to HIF1 alpha

Code	OSH00019W
ID Tag	Rb896-260409-WS
Unit size	100 µl
Immunogen	A synthetic peptide from the internal region of human HIF1 alpha conjugated to an immunogenic carrier protein was used as the antigen. The antigen shares 94% identity with rat and mouse sequences.
Conjugate	Unconjugated antibody
Also known	Hypoxia-inducible factor 1 alpha, HIF-1 alpha, ARNT-interacting protein, Member of PAS protein 1, Basic-helix-loop-helix-PAS protein MOP1, HIF1A, MOP1
Host	NZ white rabbit
Purity	Whole serum
Clonality	Polyclonal
Isotype	Polyclonal, whole serum
Applications	IHC, WB. A dilution of 1 : 300 to 1 : 2000 is recommended. The optimal dilution should be determined by the end user. Not yet tested in other applications.
Specificity	Specific for HIF1A.
Spcs X-react.	Human. Other species not yet tested.
Format	Lyophilised
Reconstitution	Reconstitute in 100 µl of sterile water. Centrifuge to remove any insoluble material.
Storage	Maintain the lyophilised/reconstituted antibodies frozen at -20°C for long term storage and refrigerated at 2-8°C for a shorter term. When reconstituting, glycerol (1:1) may be added for an additional stability. Avoid freeze and thaw cycles.
Expiry Date	12 months after reconstitution
Shipping	This item will be shipped to you at ambient temperature in a lyophilised form.
Limitation	For research use only



IHC on paraffin sections of rat kidney using Rabbit antibody to HIF1 alpha: OSH00019W.
 HIER: 1 mM EDTA, pH 8 for 20 min using Thermo's PT Module
 Detection was done using Novolink HRP polymer from Leica following manufacturer's instruction
 Primary antibody: dilution 1: 1000, incubated 30 min at RT (using Autostainer)
 Sections were counterstained with Harris Hematoxylin.

Related Products

OSH00020G Rabbit antibody to HIF1 alpha