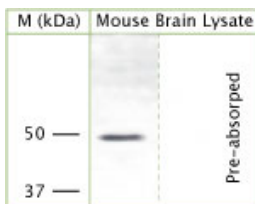


Rabbit antibody to KCNJ12

Code	OSK00028G
ID Tag	Rb859-290309-G
Unit size	500 Å, Åµg
Immunogen	A synthetic peptide from the cytoplasmic domain of rat KCNJ12 (KCNJN1, Kir2.2, IRK2) conjugated to an immunogenic carrier protein was used as the immunogen. The antigen is homologous in mouse.
Conjugate	Unconjugated antibody
Also known	ATP-sensitive inward rectifier potassium channel 12, Potassium channel, inwardly rectifying subfamily J member 12, Inward rectifier K(+) channel Kir2.2, Kir2.2v, IRK2, KCNJN1
Host	NZ white rabbit
Purity	IgG
Clonality	Polyclonal
Isotype	Polyclonal, IgG
Applications	IHC, WB. A concentration of 10-50 µg/ml is recommended. The optimal concentration should be determined by the end user. Not yet tested in other applications.
Specificity	Specific for KCNJ12.
Spcs X-react.	Rat, mouse. Other species not yet tested.
Format	Lyophilised
Reconstitution	Reconstitute in 500 µl of sterile water. Centrifuge to remove any insoluble material.
Storage	Maintain the lyophilised/reconstituted antibodies frozen at -20°C for long term storage and refrigerated at 2-8°C for a shorter term. When reconstituting, glycerol (1:1) may be added for an additional stability. Avoid freeze and thaw cycles.
Expiry Date	12 months after reconstitution
Shipping	This item will be shipped to you at ambient temperature in a lyophilised form.
Limitation	For research use only



Rabbit antibody to cytoplasmic domain of KCNJ12 (KCNJN1, Kir2.2, IRK2): whole serum (OSK00021W) at a concentration of 30 microgram/ml; blocked with 1% LFDM for 15 minutes at room temperature with shake, primary antibody incubated for 15 minutes at room temperature, washed 3 times with PBST, 5 minutes each. Secondary antibody was also incubated for 15 minutes at room temperature.

Related Products

OSK00021W Rabbit antibody to KCNJ12