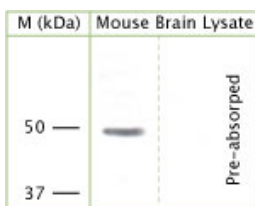


## Rabbit antibody to KCNJ12

<b>Code</b>	OSK00021W
<b>ID Tag</b>	Rb859-290309-WS
<b>Unit size</b>	100 µl
<b>Immunogen</b>	A synthetic peptide from the cytoplasmic domain of rat KCNJ12 (KCNJN1, Kir2.2, IRK2) conjugated to an immunogenic carrier protein was used as the antigen. The peptide is homologous in mouse.
<b>Conjugate</b>	Unconjugated antibody
<b>Also known</b>	ATP-sensitive inward rectifier potassium channel 12, Potassium channel, inwardly rectifying subfamily J member 12, Inward rectifier K(+) channel Kir2.2, Kir2.2v, IRK2, KCNJN1
<b>Host</b>	NZ white rabbit
<b>Purity</b>	Whole serum
<b>Clonality</b>	Polyclonal
<b>Isotype</b>	Polyclonal, whole serum
<b>Applications</b>	IHC, WB. A dilution of 1 : 300 to 1 : 2000 is recommended. The optimal dilution should be determined by the end user. Not yet tested in other applications.
<b>Specificity</b>	Specific for KCNJ12.
<b>Spcs X-react.</b>	Rat, mouse. Other species not yet tested.
<b>Format</b>	Lyophilised
<b>Reconstitution</b>	Reconstitute in 100 µl of sterile water. Centrifuge to remove any insoluble material.
<b>Storage</b>	Maintain the lyophilised/reconstituted antibodies frozen at -20°C for long term storage and refrigerated at 2-8°C for a shorter term. When reconstituting, glycerol (1:1) may be added for an additional stability. Avoid freeze and thaw cycles.
<b>Expiry Date</b>	12 months after reconstitution
<b>Shipping</b>	This item will be shipped to you at ambient temperature in a lyophilised form.
<b>Limitation</b>	For research use only



Rabbit antibody to KCNJ12 (OSK00021W) at 1: 1000 dilution; blocked with 1% LFDM for 15 minutes at room temperature with shake, primary antibody incubated for 15 minutes at room temperature, washed 3 times with PBST, 5 minutes each. Secondary antibody was also incubated for 15 minutes at room temperature.

---

### Related Products

OSK00028G Rabbit antibody to KCNJ12