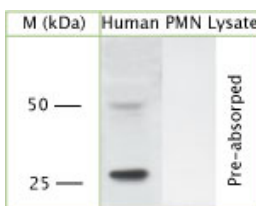


## Rabbit antibody to Pr3

<b>Code</b>	OSP00050W
<b>ID Tag</b>	Rb755-140209-WS
<b>Unit size</b>	100 ul
<b>Immunogen</b>	A synthetic peptide from the c-terminal region of human Pr3 conjugated to blue carrier protein was used as the antigen.
<b>Conjugate</b>	Unconjugated antibody
<b>Also known</b>	Leukocyte proteinase 3, AGP7, Myeloblastin, Wegener autoantigen, PR-3, P29, C-ANCA antigen, Neutrophil proteinase 4, MBN, PRTN3, NP-4
<b>Host</b>	NZ white rabbit
<b>Purity</b>	Whole serum
<b>Clonality</b>	Polyclonal
<b>Isotype</b>	Polyclonal, whole serum
<b>Applications</b>	WB, IHC, flow cytometry. A dilution of 1: 200 to 1: 1000 is recommended. The optimal dilution should be determined by the end user. Not yet tested in other applications.
<b>Specificity</b>	Specific for Pr3.
<b>Spcs X-react.</b>	Human. Other species not yet tested.
<b>Format</b>	Lyophilised
<b>Reconstitution</b>	Reconstitute in 100 ul of sterile water. Centrifuge to remove any insoluble material.
<b>Storage</b>	Maintain the lyophilised/reconstituted antibodies frozen at -20C for long term storage and refrigerated at 2-8C for a shorter term. When reconstituting, glycerol (1:1) may be added for an additional stability. Avoid freeze and thaw cycles.
<b>Expiry Date</b>	12 months after reconstitution
<b>Shipping</b>	This item will be shipped to you at ambient temperature in a lyophilised form.
<b>Limitation</b>	For research use only



WB on human PMN (peripheral blood mononuclear cells isolated from buffycoat; denatured, reduced) using Rabbit antibody to Pr3 (OSP00050W) at 1: 500 dilution; blocked with 1% LFDN for 15 minutes at room temperature with shake, primary antibody incubated for 15 minutes at room temperature, washed 3 times with PBST, 5 minutes each. Secondary antibody was also incubated for 15 minutes at room temperature.

---

### Related Products

OSP00053G	Rabbit antibody to Pr3
OSP00090W	Goat antibody to Pr3
OSP00052G	Rabbit antibody to Pr3
OSP00049W	Rabbit antibody to Pr3
OSP00054G	Rabbit antibody to Pr3
OSP00051W	Rabbit antibody to Pr3
OSP00060W	Sheep antibody to Pr3