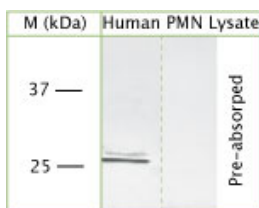


Rabbit antibody to Pr3

Code	OSP00049W
ID Tag	Rb624-170808-WS
Unit size	100 ul
Immunogen	A synthetic peptide from aa region 50-100 of human Pr3 conjugated to blue carrier protein was used as the antigen.
Conjugate	Unconjugated antibody
Also known	Leukocyte proteinase 3, AGP7, Myeloblastin, Wegener autoantigen, PR-3, P29, C-ANCA antigen, Neutrophil proteinase 4, MBN, PRTN3, NP-4
Host	NZ white rabbit
Purity	Whole serum
Clonality	Polyclonal
Isotype	Polyclonal, whole serum
Applications	WB. A dilution of 1: 200 to 1: 1000 is recommended. The optimal dilution should be determined by the end user. Not yet tested in other applications.
Specificity	Specific for Pr3.
Spcs X-react.	Human. Other species not yet tested.
Format	Lyophilised
Reconstitution	Reconstitute in 100 μ l of sterile water. Centrifuge to remove any insoluble material.
Storage	Maintain the lyophilised/reconstituted antibodies frozen at -20°C for long term storage and refrigerated at $2-8^{\circ}\text{C}$ for a shorter term. When reconstituting, glycerol (1:1) may be added for an additional stability. Avoid freeze and thaw cycles.
Expiry Date	12 months after reconstitution
Shipping	This item will be shipped to you at ambient temperature in a lyophilised form.
Limitation	For research use only



WB on human PMN (peripheral blood mononuclear cells isolated from buffycoat; denatured, reduced) using Rabbit antibody to internal region of Pr3 (Wegener autoantigen): whole serum (OSP00049W) at 1: 500 dilution; blocked with 1% LFDm for 15 minutes at room temperature with shake, primary antibody incubated for 15 minutes at room temperature, washed 3 times with PBS (1x), 5 minutes each. Secondary antibody was also incubated for 15 minutes at room temperature.

Related Products

OSP00053G	Rabbit antibody to Pr3
OSP00050W	Rabbit antibody to Pr3
OSP00052G	Rabbit antibody to Pr3
OSP00054G	Rabbit antibody to Pr3
OSP00051W	Rabbit antibody to Pr3
OSP00060W	Sheep antibody to Pr3