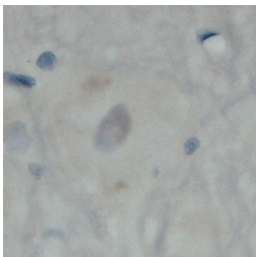


Rabbit antibody to MAL2

Code	OSM00065W
ID Tag	Rb1469-120610-WS
Unit size	100 Åµl
Immunogen	A synthetic peptide from the c-terminal region of mouse MAL2 conjugated to blue carrier protein was used as the antigen.
Conjugate	Unconjugated antibody
Also known	Mal2
Host	NZ white rabbit
Purity	Whole serum
Clonality	Polyclonal
Isotype	Polyclonal, whole serum
Applications	IHC, WB. A dilution of 1 : 300 to 1 : 2000 is recommended. The optimal dilution should be determined by the end user. Not tested in other applications.
Specificity	Specific for MAL2.
Spcs X-react.	Mouse, rat. Other species not yet tested.
Format	Lyophilised
Reconstitution	Reconstitute in 100 ul of sterile water. Centrifuge to remove any insoluble material.
Storage	Maintain the lyophilised/reconstituted antibodies frozen at -20C for long term storage and refrigerated at 2-8C for a shorter term. When reconstituting, glycerol (1:1) may be added for an additional stability. Avoid freeze and thaw cycles.
Expiry Date	12 months after reconstitution
Shipping	This item will be shipped to you at ambient temperature in a lyophilised form.
Limitation	For research use only



IHC on rat spinal cord (paraffin section) using Rabbit antibody to MAL2 (OSM00065W) at 1 : 200 dilution incubated overnight at 4C, developed with DAB/No and counterstained with hematoxylin.