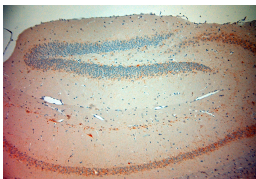


Rabbit antibody to VGLuT3

Code	OSV00047W
ID Tag	Rb3373-131218-WS
Unit size	100 ul
Immunogen	A synthetic peptide from mouse VGLUT3 conjugated to blue carrier protein was used as the antigen.
Conjugate	Unconjugated antibody
Also known	Vesicular glutamate transporter 3, Solute carrier family 17 member 8
Host	NZ white rabbit
Purity	Whole serum
Clonality	Polyclonal
Isotype	Polyclonal, whole serum
Applications	IHC, WB. A dilution of 1: 500 is recommended for WB and 1:250 for IHC-P. The optimal dilution should be determined by the end user. Not yet tested in other applications.
Specificity	Specific for VGLUT3.
Spcs X-react.	Mouse, rat, human, marmoset. Other species not yet tested.
Format	Lyophilised
Reconstitution	Reconstitute in 100 ul of sterile water. Centrifuge to remove any insoluble material.
Storage	Maintain the lyophilised/reconstituted antibodies frozen at -20C for long term storage and refrigerated at 2-8C for a shorter term. When reconstituting, glycerol (1:1) may be added for an additional stability. Avoid freeze and thaw cycles.
Expiry Date	12 months after reconstitution
Shipping	This item will be shipped to you at ambient temperature in a lyophilised form.
Limitation	For research use only



IHC-P on paraffin sections of mouse brain (hippocampus). The animal was perfused using Autoperfuser at a pressure of 130 mmHg with 300 ml 4% FA before being processed for paraffin embedding. HIER: Tris-EDTA, pH 9 for 20 min using Thermo PT Module. Blocking: 0.2% LFDM in TBST filtered thru 0.2 µm. Detection was done using Novolink HRP polymer from Leica following manufacturers instructions; DAB chromogen: Candela DAB chromogen from Osenses. Primary antibody: dilution 1: 250, incubated 30 min at RT using Autostainer. Sections were counterstained with Harris Hematoxylin.