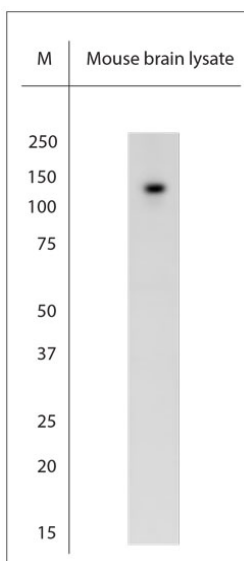


Rabbit antibody to TRPC6 (10-60)

Code	OST00276G
ID Tag	Rb618-170808-G
Unit size	500 Å, Åµg
Immunogen	A synthetic peptide from taa region 10-60 of rat TRPC6 conjugated to blue carrier protein was used as the antigen. The antigen is homologous with the corresponding sequence in mouse.
Conjugate	Unconjugated antibody
Also known	Short transient receptor potential channel 6, TrpC6, Calcium entry channel, Trp6, transient receptor potential cation channel, subfamily C, member 6, Trrp6, mtrp6
Host	NZ white rabbit
Purity	IgG
Clonality	Polyclonal
Isotype	Polyclonal, IgG
Applications	WB. A concentration of 3-10 µg/ml is recommended. The optimal concentration should be determined by the end user. Not yet tested in other applications.
Specificity	Specific for TRPC6.
Spcs X-react.	Mouse, rat. Other species not yet tested.
Format	Lyophilised
Reconstitution	Reconstitute in 500 µl of sterile water. Centrifuge to remove any insoluble material.
Storage	Maintain the lyophilised/reconstituted antibodies frozen at -20°C for long term storage and refrigerated at 2-8°C for a shorter term. When reconstituting, glycerol (1:1) may be added for an additional stability. Avoid freeze and thaw cycles.
Expiry Date	12 months after reconstitution
Shipping	This item will be shipped to you at ambient temperature in a lyophilised form.
Limitation	For research use only



WB on mouse brain lysate. Blocking: 1% LFDM for 30 min at RT; primary antibody: dilution 5 µg/ml incubated at 4C overnight.

Related Products

OST00197W Rabbit antibody to TRPC6 (10-60)