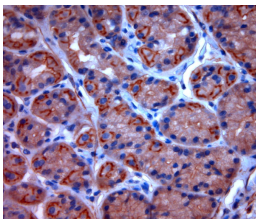


Rabbit antibody to TPC2 (700-752)

Code	OST00270G
ID Tag	Rb2508-140415-WS
Unit size	500 Å, Åµg
Immunogen	A synthetic peptide from aa region 700-752 of human TPC2 conjugated to blue carrier protein was used as the antigen.
Conjugate	Unconjugated antibody
Also known	Two pore calcium channel protein 2, Voltage-dependent calcium channel protein TPC2, TPCN2
Host	NZ white rabbit
Purity	IgG
Clonality	Polyclonal
Isotype	Polyclonal, IgG
Applications	IHC, WB. A concentration of 10-50 µg/ml is recommended. The optimal concentration should be determined by the end user. Not tested in other applications.
Specificity	Specific for TPC2.
Spcs X-react.	Human. Other species not yet tested.
Format	Lyophilised
Reconstitution	Reconstitute in 500 µl of sterile water. Centrifuge to remove any insoluble material.
Storage	Maintain the lyophilised/reconstituted antibodies frozen at -20°C for long term storage and refrigerated at 2-8°C for a shorter term. When reconstituting, glycerol (1:1) may be added for an additional stability. Avoid freeze and thaw cycles.
Expiry Date	12 months after reconstitution
Shipping	This item will be shipped to you at ambient temperature in a lyophilised form.
Limitation	For research use only



IHC-P on paraffin sections of human stomach. HIER: Tris-EDTA, pH 9 for 20 min using Thermo PT Module. Blocking: 0.2% LFDM in TBST filtered thru 0.2 µm. Detection was done using Novolink HRP polymer from Leica following manufacturers instructions. Primary antibody: dilution 10 µg/ml, incubated 30 min at RT using Autostainer. Sections were counterstained with Harris Hematoxylin.