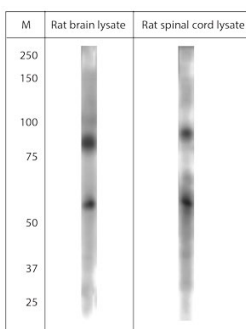


Rabbit antibody to TPC1 (750-800)

Code	OST00267W
ID Tag	Rb812-140209-WS
Unit size	100 µl
Immunogen	A synthetic peptide from aa region 750-800 of mouse TPC1 conjugated to blue carrier protein was used as the antigen. The peptide is homologous in rat and shares 98% identity with human sequence.
Conjugate	Unconjugated antibody
Also known	Two pore calcium channel protein 1, Voltage-dependent calcium channel protein TPC1, TPCN1
Host	NZ white rabbit
Purity	Whole serum
Clonality	Polyclonal
Isotype	Polyclonal, whole serum
Applications	IHC, WB (confirmed by recombinant protein). A dilution of 1 : 300 to 1 : 2000 is recommended. The optimal dilution should be determined by the end user. Not tested in other applications.
Specificity	Specific for TPC1.
Spcs X-react.	Mouse, rat, human. Other species not yet tested.
Format	Lyophilised
Reconstitution	Reconstitute in 100 µl of sterile water. Centrifuge to remove any insoluble material.
Storage	Maintain the lyophilised/reconstituted antibodies frozen at -20°C for long term storage and refrigerated at 2-8°C for a shorter term. When reconstituting, glycerol (1:1) may be added for an additional stability. Avoid freeze and thaw cycles.
Expiry Date	12 months after reconstitution
Shipping	This item will be shipped to you at ambient temperature in a lyophilised form.
Limitation	For research use only



WB on rat brain and spinal cord lysate using Rabbit antibody to TPC1 (750-800) (OST00267W).

Dilution: 1: 500, incubated overnight at 4C in MPX from LiCore.

Blocking buffer: 0.2 µm filtered 0.5% LFDM in 1x PBS containing 0.01% Tween-20

Washing buffer: 1x PBS

Detection: ECL using C-Digit from LiCore

Related Products

OST00268G	Rabbit antibody to TPC1 (750-800)
OST00385W	Rabbit antibody to TPC1