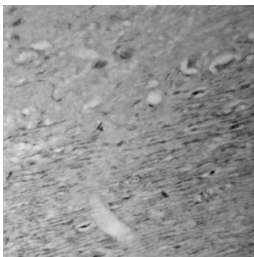


Rabbit antibody to CACNA1I

Code	OSC00089W
ID Tag	Rb809-140209-WS
Unit size	100 µl
Immunogen	A synthetic peptide from a cytoplasmic domain of human CACNA1I (Cav3.3) conjugated to an immunogenic carrier protein was used as the antigen. The peptide is homologous in rat and mouse.
Conjugate	Unconjugated antibody
Also known	Voltage-dependent T-type calcium channel subunit alpha-1I, Voltage-gated calcium channel subunit alpha Cav3.3
Host	NZ white rabbit
Purity	Whole serum
Clonality	Polyclonal
Isotype	Polyclonal, whole serum
Applications	IHC, WB. A dilution of 1 : 300 to 1 : 2000 is recommended. The optimal dilution should be determined by the end user. Not tested in other applications.
Specificity	Specific for CACNA1I.
Spcs X-react.	Human, rat, mouse. Other species not yet tested.
Format	Lyophilised
Reconstitution	Reconstitute in 100 µl of sterile water. Centrifuge to remove any insoluble material.
Storage	Maintain the lyophilised/reconstituted antibodies frozen at -20°C for long term storage and refrigerated at 2-8°C for a shorter term. When reconstituting, glycerol (1:1) may be added for an additional stability. Avoid freeze and thaw cycles.
Expiry Date	12 months after reconstitution
Shipping	This item will be shipped to you at ambient temperature in a lyophilised form.
Limitation	For research use only



IHC on rat brain (paraffin section) using Rabbit antibody to CACNA1I (OSC00089W) at 1 : 500 dilution incubated overnight at 4C. Nerve fibers are intensely stained.

Related Products

OSC00115G Rabbit antibody to CACNA1I