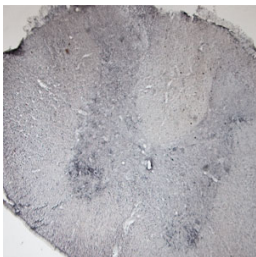


Rabbit antibody to P2RX6

Code	OSP00036W
ID Tag	Rb785-140209-WS
Unit size	100 µl
Immunogen	A synthetic peptide from aa region 350-400 of human P2X6 conjugated to blue carrier protein was used as the antigen. The antigen shares 90% identity with mouse and rat sequences.
Conjugate	Unconjugated antibody
Also known	P2RX6, P2X purinoceptor 6, ATP receptor, Purinergic receptor, P2RXL1
Host	NZ white rabbit
Purity	Whole serum
Clonality	Polyclonal
Isotype	Polyclonal, whole serum
Applications	IHC, WB. A dilution of 1 : 300 to 1 : 2000 is recommended. The optimal dilution should be determined by the end user. Not yet tested in other applications.
Specificity	Specific for P2RX6.
Spcs X-react.	Human. Other species not yet tested.
Format	Lyophilised
Reconstitution	Reconstitute in 100 µl of sterile water. Centrifuge to remove any insoluble material.
Storage	Maintain the lyophilised/reconstituted antibodies frozen at -20°C for long term storage and refrigerated at 2-8°C for a shorter term. When reconstituting, glycerol (1:1) may be added for an additional stability. Avoid freeze and thaw cycles.
Expiry Date	12 months after reconstitution
Shipping	This item will be shipped to you at ambient temperature in a lyophilised form.
Limitation	For research use only



IHC on rat spinal cord (free floating section) using Rabbit antibody to extracellular domain of P2X6 (P2RX6, P2X purinoceptor 6, ATP receptor, P2RXL1): whole serum (OSP00036W) at 1 : 300 dilution incubated overnight at room temperature (21C) and developed with DAB/Ni.

Related Products

OSP00037G Rabbit antibody to P2X6