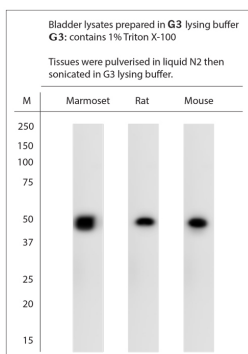


Rabbit antibody to P2X1

Code	OSP00029W
ID Tag	Rb779-140209-WS
Unit size	100 µl
Immunogen	A synthetic peptide from the cytoplasmic domain of human P2X1 conjugated to blue carrier protein was used as the antigen. The antigen shares 92% identity with rat and mouse sequence.
Conjugate	Unconjugated antibody
Also known	P2RX1, P2X1, P2X purinoceptor 1, ATP receptor
Host	NZ white rabbit
Purity	Whole serum
Clonality	Polyclonal
Isotype	Polyclonal, whole serum
Applications	IHC, WB. A dilution of 1:2000 is recommended. The optimal dilution should be determined by the end user. Not yet tested in other applications.
Specificity	Specific for P2RX1.
Spcs X-react.	Mouse, human, rat, marmoset. Other species not yet tested.
Format	Lyophilised
Reconstitution	Reconstitute in 100 µl of sterile water. Centrifuge to remove any insoluble material.
Storage	Maintain the lyophilised/reconstituted antibodies frozen at -20°C for long term storage and refrigerated at 2-8°C for a shorter term. When reconstituting, glycerol (1:1) may be added for an additional stability. Avoid freeze and thaw cycles.
Expiry Date	12 months after reconstitution
Shipping	This item will be shipped to you at ambient temperature in a lyophilised form.
Limitation	For research use only



WB on bladder lysates. Blocking: 1% LFDm for 30 min at RT; primary antibody: dilution 1:2000 incubated at 4C overnight. Click on eLAB BOOK tab to see the details.