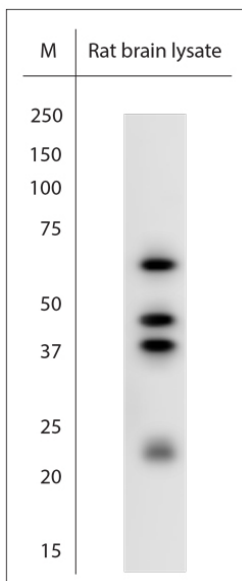


Rabbit antibody to SUMO1

Code	OSS00109W
ID Tag	Rb2776-080616-WS
Unit size	150 µl
Immunogen	A synthetic peptide from mouse SUMO 1 conjugated to blue carrier protein was used as the antigen. The antigen is homologous in human, rat and marmoset.
Conjugate	Unconjugated antibody
Also known	Small ubiquitin-related modifier 1, SUMO-1, Sumo1
Host	NZ white rabbit
Purity	Whole serum
Clonality	Polyclonal
Isotype	Polyclonal, whole serum
Applications	IHC, WB. A dilution of 1: 500 is recommended. The optimal dilution should be determined by the end user. Not yet tested in other applications.
Specificity	Specific for SUMO1.
Spcs X-react.	Rat, mouse, human, marmoset. Other species not yet tested.
Format	Lyophilised
Reconstitution	Reconstitute in 150 µl of sterile water. Centrifuge to remove any insoluble material.
Storage	Maintain the lyophilised/reconstituted antibodies frozen at -20°C for long term storage and refrigerated at 2-8°C for a shorter term. When reconstituting, glycerol (1:1) may be added for an additional stability. Avoid freeze and thaw cycles.
Expiry Date	12 months after reconstitution
Shipping	This item will be shipped to you at ambient temperature in a lyophilised form.
Limitation	For research use only



WB on rat brain lysate. Lysate was prepared in Ripa containing 1% Triton X-100, 1% SDS and 1% SDC. Blocking: 1% LFDM for 30 min at RT; primary antibody: dilution 1:500 incubated at 4C overnight. Click on eLAB BOOK tab to see the details.

Related Products

OSS00110G Rabbit antibody to SUMO1