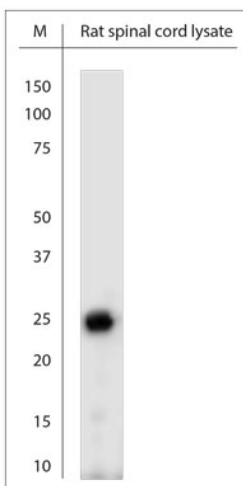


## Rabbit antibody to RhoF (130-180)

<b>Code</b>	OSR00316W
<b>ID Tag</b>	Rb789-140209-WS
<b>Unit size</b>	100 µl
<b>Immunogen</b>	A synthetic peptide from aa region 130-180 of human RhoF conjugated to blue carrier protein was used as the antigen. The antigen is homologous in rat and mouse.
<b>Conjugate</b>	Unconjugated antibody
<b>Also known</b>	Rho family GTPase Rif, Rho in filopodia, ARHF, RIF, Rho in filopodia
<b>Host</b>	NZ white rabbit
<b>Purity</b>	Whole serum
<b>Clonality</b>	Polyclonal
<b>Isotype</b>	Polyclonal, whole serum
<b>Applications</b>	IHC, WB. A dilution of 1 : 300 to 1 : 2000 is recommended. The optimal dilution should be determined by the end user. Not yet tested in other applications.
<b>Specificity</b>	Specific for RhoF.
<b>Spcs X-react.</b>	Human, rat, mouse. Other species not yet tested.
<b>Format</b>	Lyophilised
<b>Reconstitution</b>	Reconstitute in 100 µl of sterile water. Centrifuge to remove any insoluble material.
<b>Storage</b>	Maintain the lyophilised/reconstituted antibodies frozen at -20°C for long term storage and refrigerated at 2-8°C for a shorter term. When reconstituting, glycerol (1:1) may be added for an additional stability. Avoid freeze and thaw cycles.
<b>Expiry Date</b>	12 months after reconstitution
<b>Shipping</b>	This item will be shipped to you at ambient temperature in a lyophilised form.
<b>Limitation</b>	For research use only



WB on rat spinal cord lysate using Rabbit antibody to RhoF (130-180) (OSR00316W) at 1:500 dilution. Incubated 30 min at RT with shake. Blocking: 0.5% LFDM in 1x PBS containing 0.1% Tween-20

---

### Related Products

OSR00320G Rabbit antibody to RhoF (130-180)