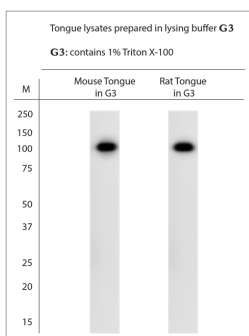


Rabbit antibody to TAS1R2

Code	OST00254W
ID Tag	Rb734-061208-WS
Unit size	100 ul
Immunogen	A synthetic peptide from extracellular domain of rat TAS1R2 conjugated to blue carrier protein was used as the antigen.
Conjugate	Unconjugated antibody
Also known	Taste receptor type 1 member 2, sweet taste receptor T1R2, G-protein coupled receptor 71, TAS1R2, TR2, T1R2, GPR71, TS1R2
Host	NZ white rabbit
Purity	Whole serum
Clonality	Polyclonal
Isotype	Polyclonal, whole serum
Applications	IHC, WB. A dilution of 1 : 2000 is recommended. The optimal dilution should be determined by the end user. Not yet tested in other applications.
Specificity	Specific for TAS1R2.
Spcs X-react.	Rat, mouse, marmoset, human. Other species not yet tested.
Format	Lyophilised. This product contains 0.02% benzalkonium chloride.
Reconstitution	Reconstitute in 100 ul of sterile water. Centrifuge to remove any insoluble material.
Storage	Maintain the lyophilised/reconstituted antibodies frozen at -20C for long term storage and refrigerated at 2-8C for a shorter term. When reconstituting, glycerol (1:1) may be added for an additional stability. Avoid freeze and thaw cycles.
Expiry Date	12 months after reconstitution
Shipping	This item will be shipped to you at ambient temperature in a lyophilised form.
Limitation	For research use only



WB on tongue lysates. Blocking: 1% LFDM for 30 min at RT; primary antibody: dilution 1:2000 incubated overnight at 4C. Click on eLAB BOOK tab to see the details.

Related Products

OST00477W Guinea pig antibody to TAS1R2