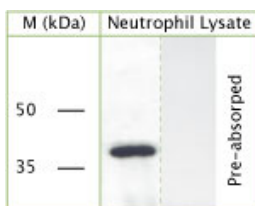


Sheep antibody to GAPDH

Code	OSG00034W
ID Tag	Sh101-060908-WS
Unit size	100 ul
Immunogen	A synthetic peptide from c-terminal of rat GAPDH conjugated to blue carrier protein was used as the antigen. The antigen is homologous in mouse and shares 90% identity with human sequence.
Conjugate	Unconjugated antibody
Also known	38 kDa BFA dependent ADP ribosylation substrate, BARS-38, Glyceraldehyde-3-phosphate dehydrogenase
Host	Sheep
Purity	Whole serum
Clonality	Polyclonal
Isotype	Polyclonal, whole serum
Applications	WB, IHC. A dilution of 1:1000 to 1:5000 is recommended. The optimal dilution should be determined by the end user. Not yet tested in other applications.
Specificity	Specific for GAPDH
Spcs X-react.	Rat, mouse, human. Other species not yet tested.
Format	Lyophilised
Reconstitution	Reconstitute in 100 ul of sterile water. Centrifuge to remove any insoluble material.
Storage	Maintain the lyophilised/reconstituted antibodies frozen at -20C for long term storage and refrigerated at 2-8C for a shorter term. When reconstituting, glycerol (1:1) may be added for an additional stability. Avoid freeze and thaw cycles.
Expiry Date	12 months after reconstitution
Shipping	This item will be shipped to you at ambient temperature in a lyophilised form.
Limitation	For research use only



WB on human neutrophil lysate using Sheep antibody to GAPDH (OSG00034W) at 1:3000 dilution.

Related Products

OSG00035G	Sheep antibody to GAPDH
OSG00107W	Guinea pig antibody to GAPDH