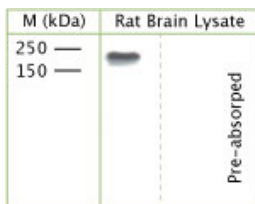


Sheep antibody to phospho Y820 TrkC

Code	OST00237W
ID Tag	Sh105-060908-WS
Unit size	100 ul
Immunogen	A synthetic peptide to phospho Y820 of human TrkC conjugated to blue carrier protein was used as the antigen. The peptide is homologous in rat and mouse.
Conjugate	Unconjugated antibody
Also known	Neurotrophic tyrosine kinase receptor type 3, TrkC tyrosine kinase, GP145-TrkC, Trk-C, NT-3 growth factor receptor, NTRK3
Host	Sheep
Purity	Whole serum
Clonality	Polyclonal
Isotype	Polyclonal, whole serum
Applications	IHC, WB. A dilution of 1 : 300 to 1 : 2000 is recommended. The optimal dilution should be determined by the end user. Not yet tested in other applications. This antibody may also recognise the unphosphorylated form.
Specificity	Specific for TrkC.
Spcs X-react.	Rat, mouse, human. Other species not yet tested.
Format	Lyophilised
Reconstitution	Reconstitute in 100 ul of sterile water. Centrifuge to remove any insoluble material.
Storage	Maintain the lyophilised/reconstituted antibodies frozen at -20C for long term storage and refrigerated at 2-8C for a shorter term. When reconstituting, glycerol (1:1) may be added for an additional stability. Avoid freeze and thaw cycles.
Expiry Date	12 months after reconstitution
Shipping	This item will be shipped to you at ambient temperature in a lyophilised form.
Limitation	For research use only



WB on rat brain lysate using Sheep antibody to phospho Y820 TrkC (OST00237W) at 1 : 1000 dilution incubated overnight at 4C. A single band will be detected. Pre-absorption of the antibody with the immunising peptide completely abolishes the detected band.

Related Products

OST00238G Sheep antibody to phospho Y820 TrkC