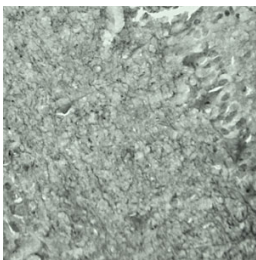


Rabbit antibody to SYT17

Code	OSS00100G
ID Tag	Rb471-150608-G
Unit size	500 Å, Åµg
Immunogen	A synthetic peptide from the internal region of human Synaptotagmin 17 conjugated to an immunogenic carrier protein was used as the antigen. The peptide is homologous in rat and mouse.
Conjugate	Unconjugated antibody
Also known	Synaptotagmin-17, Synaptotagmin 17, SYT-17, Synaptotagmin XVII, SytXVII, Protein B/K
Host	NZ white rabbit
Purity	IgG
Clonality	Polyclonal
Isotype	Polyclonal, IgG
Applications	IHC, WB. A concentration of 10-50 µg/ml is recommended. The optimal concentration should be determined by the end user. Not yet tested in other applications.
Specificity	Specific for SYT17.
Spcs X-react.	Mouse, rat, human. Other species not yet tested.
Format	Lyophilised
Reconstitution	Reconstitute in 500 µl of sterile water. Centrifuge to remove any insoluble material.
Storage	Maintain the lyophilised/reconstituted antibodies frozen at -20°C for long term storage and refrigerated at 2-8°C for a shorter term. When reconstituting, glycerol (1:1) may be added for an additional stability. Avoid freeze and thaw cycles.
Expiry Date	12 months after reconstitution
Shipping	This item will be shipped to you at ambient temperature in a lyophilised form.
Limitation	For research use only



IHC on mouse brain (cryo section) using Rabbit antibody to Synaptotagmin 17 (OSS00100G) at a concentration of 50 µg/ml incubated overnight at 4C.

Related Products

OSS00099W	Rabbit antibody to SYT17
OSS00255W	Goat antibody to SYT17