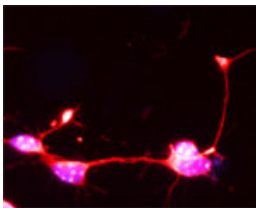


Rabbit antibody to SYT17

Code	OSS00099W
ID Tag	Rb471-150608-WS
Unit size	100 µl
Immunogen	A synthetic peptide from the internal region of human SYT17 to an immunogenic carrier protein was used as the antigen. The peptide is homologous in rat and mouse.
Conjugate	Unconjugated antibody
Also known	Synaptotagmin-17, Synaptotagmin 17, SYT-17, Synaptotagmin XVII, SytXVII, Protein B/K
Host	NZ white rabbit
Purity	Whole serum
Clonality	Polyclonal
Isotype	Polyclonal, whole serum
Applications	IHC, WB. A dilution of 1 : 300 to 1 : 2000 is recommended. The optimal dilution should be determined by the end user. Not yet tested in other applications.
Specificity	Specific for SYT17.
Spcs X-react.	Mouse, rat, human. Other species not yet tested.
Format	Lyophilised
Reconstitution	Reconstitute in 100 µl of sterile water. Centrifuge to remove any insoluble material.
Storage	Maintain the lyophilised/reconstituted antibodies frozen at -20°C for long term storage and refrigerated at 2-8°C for a shorter term. When reconstituting, glycerol (1:1) may be added for an additional stability. Avoid freeze and thaw cycles.
Expiry Date	12 months after reconstitution
Shipping	This item will be shipped to you at ambient temperature in a lyophilised form.
Limitation	For research use only



IF on 1 day- old mouse cortical cell culture using Rabbit antibody to Synaptotagmin 17 at 1: 1000 dilution. DAPI counter stained.

Related Products

OSS00100G	Rabbit antibody to SYT17
OSS00255W	Goat antibody to SYT17