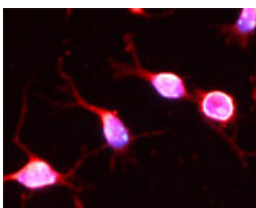


Rabbit antibody to SCAMP1 (90-140)

Code	OSS00087W
ID Tag	Rb455-150608-WS
Unit size	100 µl
Immunogen	A synthetic peptide from aa region 90-140 of human SCAMP1 conjugated to blue carrier protein was used as the antigen. The peptide is homologous in rat and mouse.
Conjugate	Unconjugated antibody
Also known	SCAMP-1, SCAMP 1, Secretory carrier-associated membrane protein 1, Secretory carrier membrane protein 1, SCAMP 37
Host	NZ white rabbit
Purity	Whole serum
Clonality	Polyclonal
Isotype	Polyclonal, whole serum
Applications	IHC, WB. A dilution of 1 : 300 to 1 : 2000 is recommended. The optimal dilution should be determined by the end user. Not tested in other applications.
Specificity	Specific for SCAMP1.
Spcs X-react.	Mouse, rat, human. Other species not yet tested.
Format	Lyophilised
Reconstitution	Reconstitute in 100 µl of sterile water. Centrifuge to remove any insoluble material.
Storage	Maintain the lyophilised/reconstituted antibodies frozen at -20°C for long term storage and refrigerated at 2-8°C for a shorter term. When reconstituting, glycerol (1:1) may be added for an additional stability. Avoid freeze and thaw cycles.
Expiry Date	12 months after reconstitution
Shipping	This item will be shipped to you at ambient temperature in a lyophilised form.
Limitation	For research use only



IF on 1 day- old mouse cortical cell culture using Rabbit antibody to SCAMP1 at 1: 2000 dilution. DAPI counter stained.

Related Products

OSS00096G Rabbit antibody to SCAMP1 (90-140)