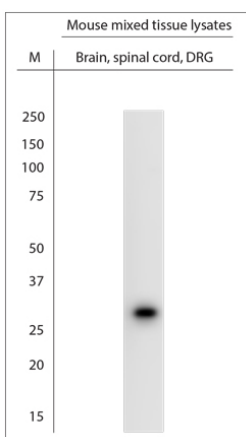


Rabbit antibody to CHMP2A

Code	OSC00062W
ID Tag	Rb694-060908-WS
Unit size	100 µl
Immunogen	A synthetic peptide from the n-terminal of human CHMP2A conjugated to blue carrier protein was used as the antigen. The peptide is homologous in rat and mouse.
Conjugate	Unconjugated antibody
Also known	Chromatin-modifying protein 2a, Vacuolar protein-sorting-associated protein 2-1, Vps2-1, hVps2-1, Putative breast adenocarcinoma marker BC-2, BC2, Charged multivesicular body protein 2a
Host	NZ white rabbit
Purity	Whole serum
Clonality	Polyclonal
Isotype	Polyclonal, whole serum
Applications	IHC, WB. A dilution of 1 : 1000 is recommended. The optimal dilution should be determined by the end user. Not tested in other applications.
Specificity	Specific for CHMP2A.
Spcs X-react.	Mouse, rat, human. Other species not yet tested.
Format	Lyophilised
Reconstitution	Reconstitute in 100 µl of sterile water. Centrifuge to remove any insoluble material.
Storage	Maintain the lyophilised/reconstituted antibodies frozen at -20°C for long term storage and refrigerated at 2-8°C for a shorter term. When reconstituting, glycerol (1:1) may be added for an additional stability. Avoid freeze and thaw cycles.
Expiry Date	12 months after reconstitution
Shipping	This item will be shipped to you at ambient temperature in a lyophilised form.
Limitation	For research use only



WB on mouse tissue lysate. Blocking: 1% LFDM for 30 min at RT; primary antibody: dilution 1:1000 incubated at 4C overnight. Click on eLAB BOOK tab to see the details.