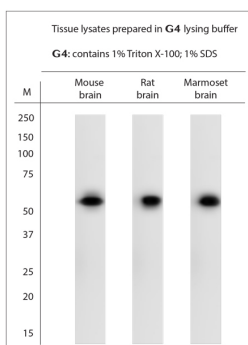


## Rabbit antibody to STAM1, 2

<b>Code</b>	OSS00085W
<b>ID Tag</b>	Rb673-060908-WS
<b>Unit size</b>	100 µl
<b>Immunogen</b>	A synthetic peptide from human STAM 1, 2 (STAM-1, STAM-2) conjugated to blue carrier protein was used as the antigen. The peptide is homologous in many species including rat, mouse, zebra fish and xenopus.
<b>Conjugate</b>	Unconjugated antibody
<b>Also known</b>	STAM1, STAM-1, STAM2, STAM-2, Signal transducing adapter molecule 1, Signal transducing adapter molecule 2, HBP, Hrs-binding protein
<b>Host</b>	NZ white rabbit
<b>Purity</b>	Whole serum
<b>Clonality</b>	Polyclonal
<b>Isotype</b>	Polyclonal, whole serum
<b>Applications</b>	IHC, WB. A dilution of 1: 5000 is recommended. The optimal dilution should be determined by the end user.
<b>Specificity</b>	Specific for STAM1 & 2.
<b>Spcs X-react.</b>	Human, rat, mouse, marmoset. Other species not yet tested.
<b>Format</b>	Lyophilised
<b>Reconstitution</b>	Reconstitute in 100 µl of sterile water. Centrifuge to remove any insoluble material.
<b>Storage</b>	Maintain the lyophilised/reconstituted antibodies frozen at -20°C for long term storage and refrigerated at 2-8°C for a shorter term. When reconstituting, glycerol (1:1) may be added for an additional stability. Avoid freeze and thaw cycles.
<b>Expiry Date</b>	12 months after reconstitution
<b>Shipping</b>	This item will be shipped to you at ambient temperature in a lyophilised form.
<b>Limitation</b>	For research use only



WB on brain tissue lysates. Blocking: 1% LFDM for 30 min at RT; primary antibody: dilution 1:4000 incubated at 4C overnight. Click on eLAB BOOK tab to see the details.

---

### Related Products

OSS00106G Rabbit antibody to STAM 1, 2