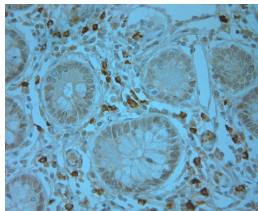


## Rabbit antibody to phospho T202 & Y204 Erk1, Erk2

<b>Code</b>	OSE00010G
<b>ID Tag</b>	Rb706-060908-G
<b>Unit size</b>	500 ug
<b>Immunogen</b>	A synthetic peptide from the phospho T202 & Y204 of human Erk1, Erk2 conjugated to blue carrier protein was used as the antigen. The peptide is homologous in many species including rat, mouse, zebra fish, xenopus and chicken.
<b>Conjugate</b>	Unconjugated antibody
<b>Also known</b>	Mitogen-activated protein kinase 3, Extracellular signal-regulated kinase 1, Insulin-stimulated MAP2 kinase, MAP kinase 1, MAPK 1, p44-ERK1, ERT2, p44-MAPK, Microtubule-associated protein 2 kinase, Mitogen-activated protein kinase 1, Extracellular signal-regulated kinase 2, ERK-2, Mitogen-activated protein kinase 2, MAP kinase 2, MAPK 2, p42-MAPK, ERT1, MAPK1, PRKM1, PRKM2, MAPK3, PRKM3
<b>Host</b>	NZ white rabbit
<b>Purity</b>	IgG
<b>Clonality</b>	Polyclonal
<b>Isotype</b>	Polyclonal, IgG
<b>Applications</b>	IHC, WB. A concentration of 10-50 ug/ml is recommended. The optimal concentration should be determined by the end user. This antibody may also recognise the unphosphorylated form. Not yet tested in other applications.
<b>Specificity</b>	Specific for Erk1 and Erk2.
<b>Spcs X-react.</b>	Mouse, rat, human. Other species not yet tested.
<b>Format</b>	Lyophilised
<b>Reconstitution</b>	Reconstitute in 500 ul of sterile water. Centrifuge to remove any insoluble material.
<b>Storage</b>	Maintain the lyophilised/reconstituted antibodies frozen at -20C for long term storage and refrigerated at 2-8C for a shorter term. When reconstituting, glycerol (1:1) may be added for an additional stability. Avoid freeze and thaw cycles.
<b>Expiry Date</b>	12 months after reconstitution
<b>Shipping</b>	This item will be shipped to you at ambient temperature in a lyophilised form.
<b>Limitation</b>	For research use only



IHC on paraffin sections of human small intestine using Rabbit antibody to phospho T202 & Y204 Erk1, Erk2: OSE00010G.  
 HIER: Tris-EDTA, pH 9 for 20 min using Thermo's PT Module  
 Detection was done using Novolink HRP polymer from Leica following manufacturer's instruction  
 Primary antibody: dilution 1: 300, incubated 30 min at RT (using Autostainer).  
 Sections were counterstained with Harris Hematoxylin.

---

### Related Products

OSE00009W Rabbit antibody to phospho T202 & Y204 Erk1, Erk2