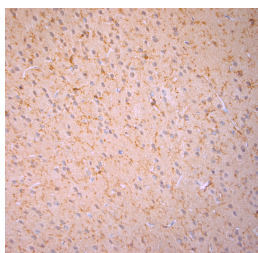


## Rabbit antibody to Cofilin 1

<b>Code</b>	OSC00050W
<b>ID Tag</b>	Rb664-060908-WS
<b>Unit size</b>	100 µl
<b>Immunogen</b>	A synthetic peptide from the phospho Y140 & S156 of human Cofilin-1 (Cofilin, non-muscle isoform) conjugated to blue carrier protein was used as the antigen. The peptide is homologous in rat and mouse.
<b>Conjugate</b>	Unconjugated antibody
<b>Also known</b>	Cofilin, non-muscle isoform
<b>Host</b>	NZ white rabbit
<b>Purity</b>	Whole serum
<b>Clonality</b>	Polyclonal
<b>Isotype</b>	Polyclonal, whole serum
<b>Applications</b>	IHC, WB. A dilution of 1 : 1000 is recommended. The optimal dilution should be determined by the end user.
<b>Specificity</b>	Specific for Cofilin-1.
<b>Spcs X-react.</b>	Mouse, rat, human. Other species not yet tested.
<b>Format</b>	Lyophilised
<b>Reconstitution</b>	Reconstitute in 100 µl of sterile water. Centrifuge to remove any insoluble material.
<b>Storage</b>	Maintain the lyophilised/reconstituted antibodies frozen at -20°C for long term storage and refrigerated at 2-8°C for a shorter term. When reconstituting, glycerol (1:1) may be added for an additional stability. Avoid freeze and thaw cycles.
<b>Expiry Date</b>	12 months after reconstitution
<b>Shipping</b>	This item will be shipped to you at ambient temperature in a lyophilised form.
<b>Limitation</b>	For research use only



IHC-P on paraffin sections of mouse brain.  
 The animal was perfused using Autoperfuser at a pressure of 130 mmHg with 300 ml 4% FA before being processed for paraffin embedding. HIER: Tris-EDTA, pH 9 for 20 min using Thermo PT Module.  
 Blocking: 0.2% LFDM in TBST filtered thru 0.2 µm.  
 Detection was done using Novolink HRP polymer from Leica following manufacturers instructions; DAB chromogen: Candela DAB chromogen from Osenses.  
 Primary antibody: dilution 1: 1000, incubated 30 min at RT using Autostainer.  
 Sections were counterstained with Harris Hematoxylin.

---

### Related Products

OSC00052G Rabbit antibody to Cofilin 1