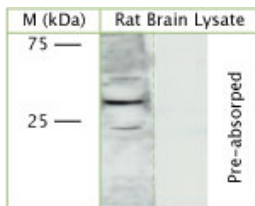


## Rabbit antibody to SNF8

<b>Code</b>	OSV00023W
<b>ID Tag</b>	Rb691-060908-WS
<b>Unit size</b>	100 µl
<b>Immunogen</b>	A synthetic peptide from the internal region of human SNF8 conjugated to an immunogenic carrier protein was used as the antigen. The antigen is homologous in rat, mouse and xenopus.
<b>Conjugate</b>	Unconjugated antibody
<b>Also known</b>	EAP30, SNF8, ELL-associated protein of 30 kDa, ESCRT-II complex subunit VPS22
<b>Host</b>	NZ white rabbit
<b>Purity</b>	Whole serum
<b>Clonality</b>	Polyclonal
<b>Isotype</b>	Polyclonal, whole serum
<b>Applications</b>	IHC, WB. A dilution of 1 : 300 to 1 : 2000 is recommended. The optimal dilution should be determined by the end user. Not yet tested in other applications.
<b>Specificity</b>	Specific for SNF8.
<b>Spcs X-react.</b>	Mouse, rat, human. Other species not yet tested.
<b>Format</b>	Lyophilised
<b>Reconstitution</b>	Reconstitute in 100 µl of sterile water. Centrifuge to remove any insoluble material.
<b>Storage</b>	Maintain the lyophilised/reconstituted antibodies frozen at -20°C for long term storage and refrigerated at 2-8°C for a shorter term. When reconstituting, glycerol (1:1) may be added for an additional stability. Avoid freeze and thaw cycles.
<b>Expiry Date</b>	12 months after reconstitution
<b>Shipping</b>	This item will be shipped to you at ambient temperature in a lyophilised form.
<b>Limitation</b>	For research use only



WB on rat brain lysate using Rabbit antibody to SNF8 (OSV00023W) at 1 : 1000 dilution. Pre-absorption of the antibody with the immunising peptide completely abolishes the detected band.

---

### Related Products

OSV00024G	Rabbit antibody to SNF8
OSV00050W	Sheep antibody to SNF8