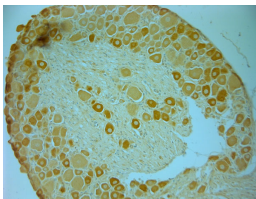


Rabbit antibody to AKT

Code	OSA00058W
ID Tag	Rb709-060908-WS
Unit size	100 ul
Immunogen	A synthetic peptide from mouse AKT conjugated to blue carrier protein was used as the antigen. The peptide is homologous in rat, human and chicken.
Conjugate	Unconjugated antibody
Also known	RAC-alpha serine/threonine-protein kinase, RAC-PK-alpha, Protein kinase B, PKB, C-AKT, PKB, RAC, AKT1
Host	NZ white rabbit
Purity	Whole serum
Clonality	Polyclonal
Isotype	Polyclonal, whole serum
Applications	IHC, WB. A dilution of 1 : 1000 to 1 : 2000 is recommended. The optimal dilution should be determined by the end user. This antibody is also very likely to recognise the unphosphorylated form.
Specificity	Specific for AKT1, AKT2, AKT3.
Spcs X-react.	Mouse, rat, human. Other species not yet tested.
Format	Lyophilised
Reconstitution	Reconstitute in 100 ul of sterile water. Centrifuge to remove any insoluble material.
Storage	Maintain the lyophilised/reconstituted antibodies frozen at -20C for long term storage and refrigerated at 2-8C for a shorter term. When reconstituting, glycerol (1:1) may be added for an additional stability. Avoid freeze and thaw cycles.
Expiry Date	12 months after reconstitution
Shipping	This item will be shipped to you at ambient temperature in a lyophilised form.
Limitation	For research use only



IHC-P on rat DRG