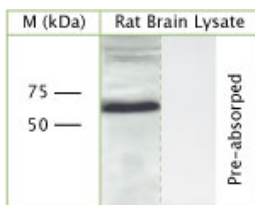


Rabbit antibody to CHMP6

Code	OSC00049W
ID Tag	Rb653-060908-WS
Unit size	100 ul
Immunogen	A synthetic peptide from the c-terminal region of mouse CHMP6 conjugated to an antigen carrier protein was used as the antigen. The antigen shares 95% identity with rat's.
Conjugate	Unconjugated antibody
Also known	Charged multivesicular body protein 6, Chromatin-modifying protein 6
Host	NZ white rabbit
Purity	Whole serum
Clonality	Polyclonal
Isotype	Polyclonal, whole serum
Applications	IHC, WB. A dilution of 1 : 300 to 1 : 2000 is recommended. The optimal dilution should be determined by the end user. Not yet tested in other applications.
Specificity	Specific for CHMP6.
Spcs X-react.	Mouse, rat. Other species not yet tested.
Format	Lyophilised
Reconstitution	Reconstitute in 100 ul of sterile water. Centrifuge to remove any insoluble material.
Storage	Maintain the lyophilised/reconstituted antibodies frozen at -20C for long term storage and refrigerated at 2-8C for a shorter term. When reconstituting, glycerol (1:1) may be added for an additional stability. Avoid freeze and thaw cycles.
Expiry Date	12 months after reconstitution
Shipping	This item will be shipped to you at ambient temperature in a lyophilised form.
Limitation	For research use only



WB on rat brain lysate under reducing/denatured conditions using Rabbit antibody to CHMP6 (OSC00049W) at 1 : 1000 dilution. Absorption of the antibody with the immunising peptide completely abolishes the detected band. Note: the expected MW is 23.5 kD however, a band of ~70 kD is detected. This might be due to CHMP6 being a component of a bigger complex.

Related Products

OSC00121G Rabbit antibody to CHMP6